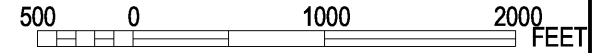


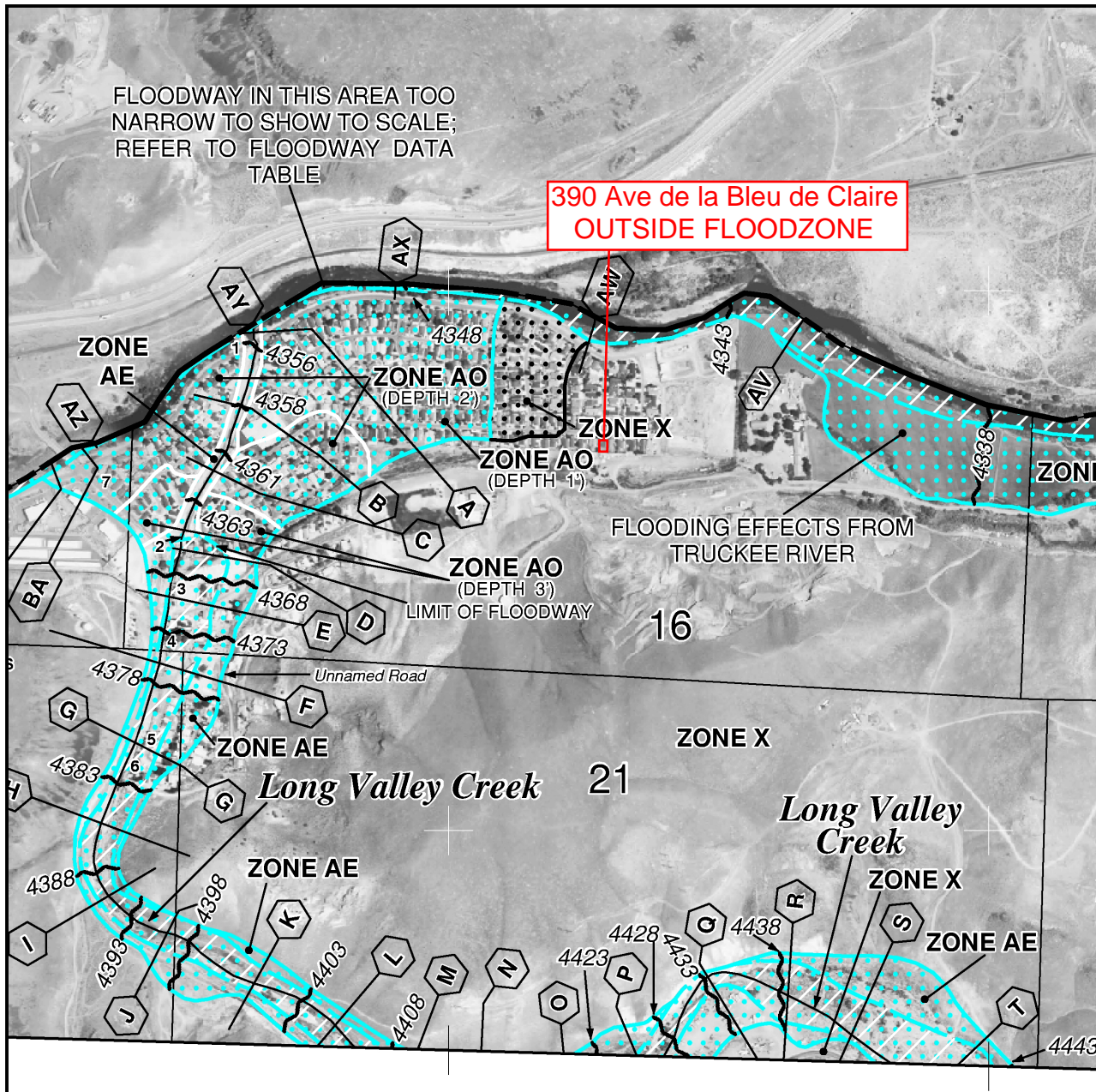


MAP SCALE 1" = 1000'



FLOODWAY IN THIS AREA TOO NARROW TO SHOW TO SCALE; REFER TO FLOODWAY DATA TABLE

390 Ave de la Bleu de Claire
OUTSIDE FLOODZONE



NFIP

PANEL 0045D

FIRM
FLOOD INSURANCE RATE MAP
STOREY COUNTY,
NEVADA
AND INCORPORATED AREAS

PANEL 45 OF 300
(SEE MAP INDEX FOR FIRM PANEL LAYOUT)

CONTAINS:

| COMMUNITY | NUMBER | PANEL | SUFFIX |
|---------------|--------|-------|--------|
| STOREY COUNTY | 320033 | 0045 | D |

Notice to User: The Map Number shown below should be used when placing map orders; the Community Number above should be used on insurance applications for the subject community.



MAP NUMBER
32029C0045D
EFFECTIVE DATE
JANUARY 16, 2009

Federal Emergency Management Agency

This is an official copy of a portion of the above referenced flood map. It was extracted using F-MIT On-Line. This map does not reflect changes or amendments which may have been made subsequent to the date on the title block. For the latest product information about National Flood Insurance Program flood maps check the FEMA Flood Map Store at www.msc.fema.gov