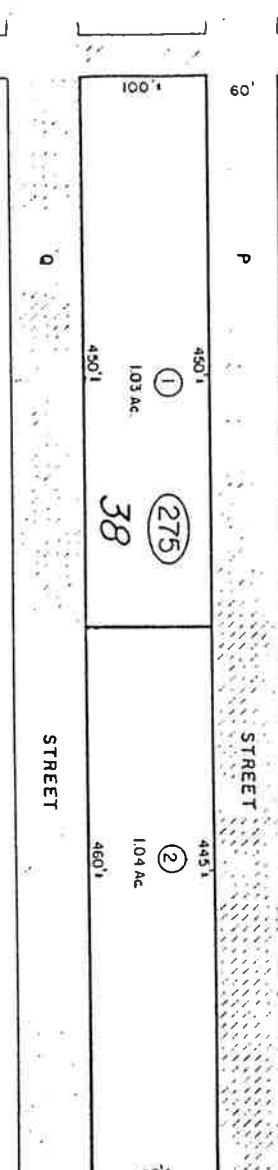
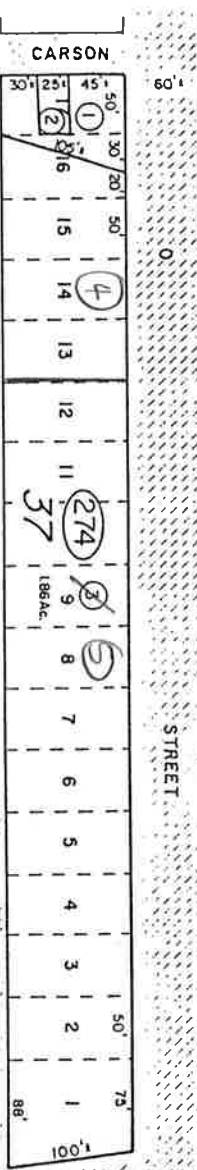
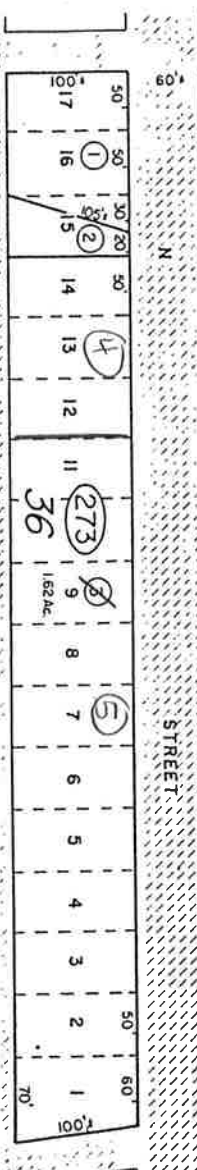
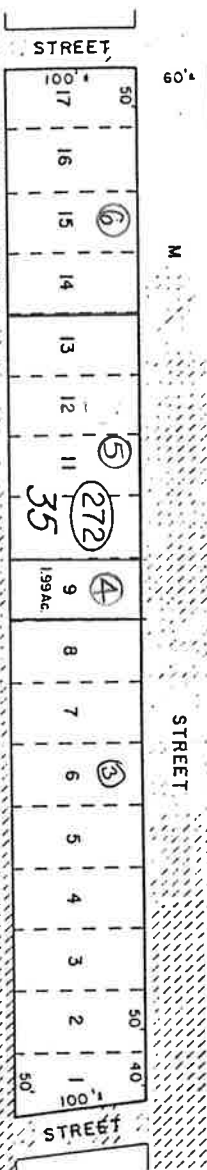
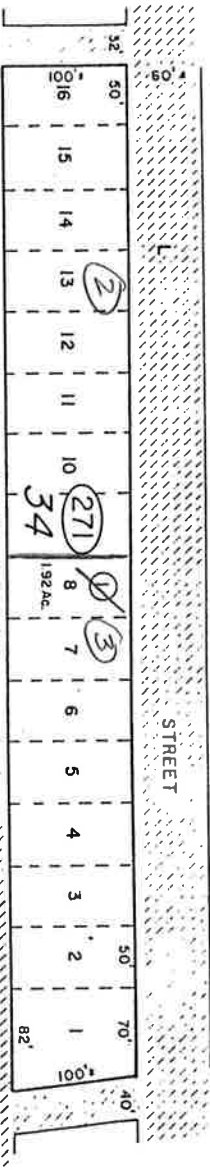


(21)



(31)

Por. of NE⁴NE⁴ of Sec. 29
T17N, R21E, M.D.B. 8M.



STOREY COUNTY, NEVADA
 This map is prepared for the use of the Storey County
 Assessor for assessment and illustrative purposes ONLY.
 It does not represent a survey. No liability is assumed as to the
 sufficiency or accuracy of the data delineated herein.

Virginia City
 STOREY COUNTY