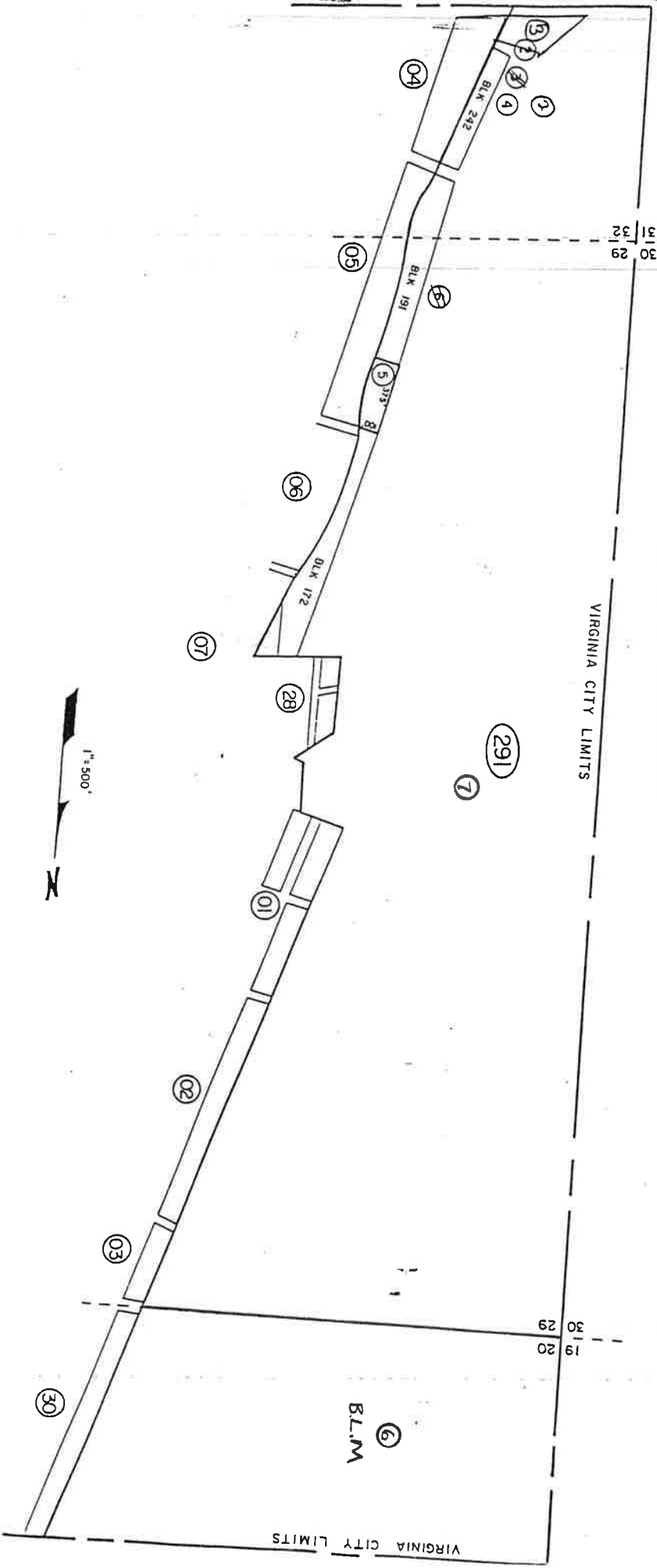


PORTION OF S1/2 OF SW 1/4 OF SEC. 20,
 PORTION OF W1/2 OF SECTION 29,
 PORTION OF NW 1/4 OF NW 1/4 OF SEC. 32,
 T17N, R21E, M.D.B.&M.



INDEFINITE PARCELS
 01-291-02,03,04,06

STOREY COUNTY, NEVADA

This map is prepared for the use of the Storey County Assessor for assessment and illustrative purposes ONLY. It does not represent a survey. No liability is assumed as to the sufficiency or accuracy of the data delineated herein.

REV/DOAS/OCT 88/DA
 PARC/NOV 80/DL
 DOT/DOAS/OCT 80/DL

Virginia City
 STOREY COUNTY