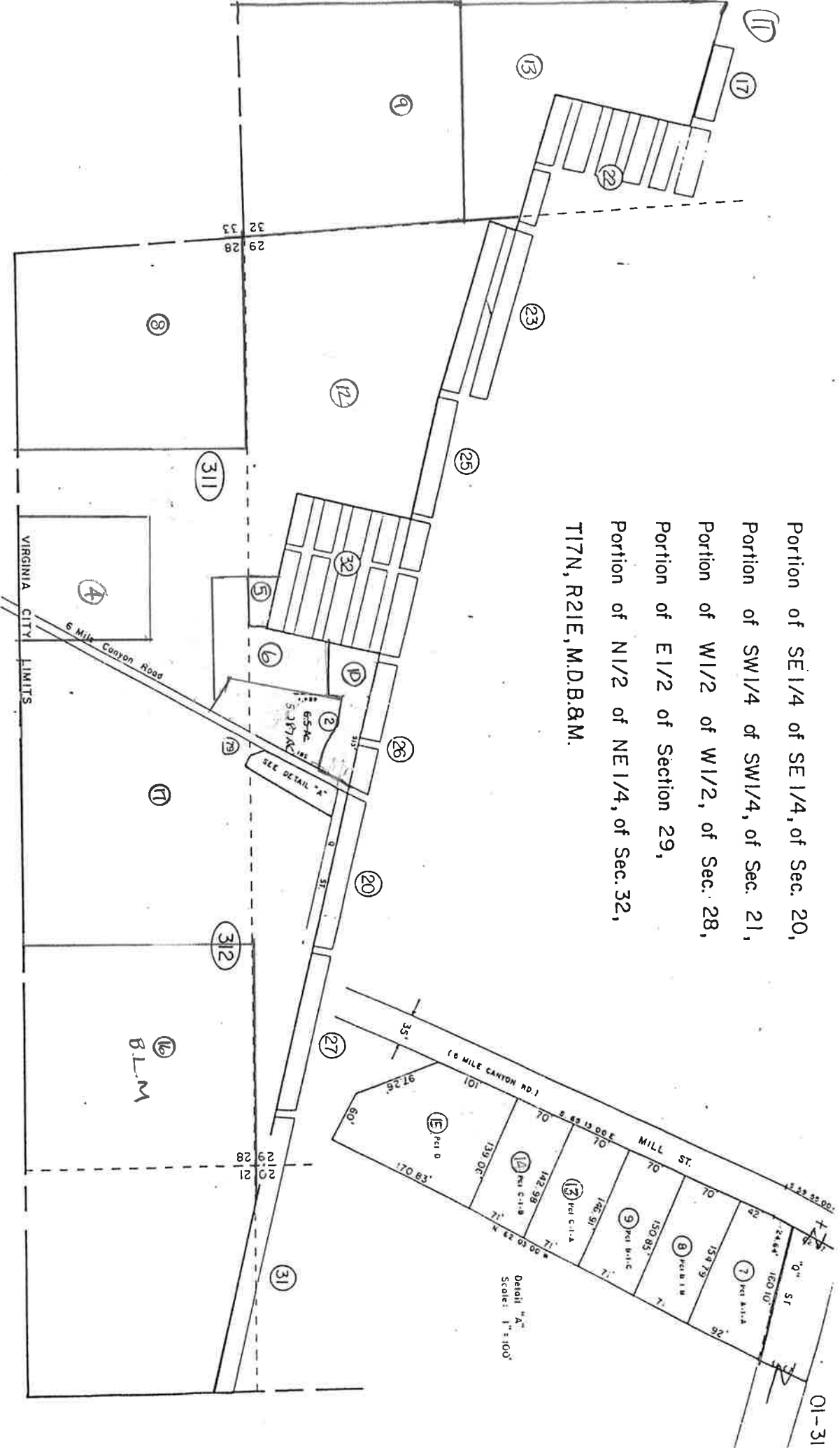


Portion of SE 1/4 of SE 1/4, of Sec. 20,  
 Portion of SW 1/4 of SW 1/4, of Sec. 21,  
 Portion of W 1/2 of W 1/2, of Sec. 28,  
 Portion of E 1/2 of Section 29,  
 Portion of N 1/2 of NE 1/4, of Sec. 32,  
 T17N, R21E, M.D.B. & M.



01 - 311 - 03 Flooding parcel.

REV/DOAS/JUNE 92/7G  
 REV/DOAS/OCT 88/DA  
 CH/CKE 88/7A  
 PARC/NOV 80/DL  
 DOT/DOAS/OCT 80/DL

STOREY COUNTY, NEVADA  
 This map is prepared for the use of the Storey County  
 Assessor for assessment and illustrative purposes ONLY.  
 It does not represent a survey. No liability is assumed as to the  
 sufficiency or accuracy of the data delineated herein.

Virginia City  
 STOREY COUNTY