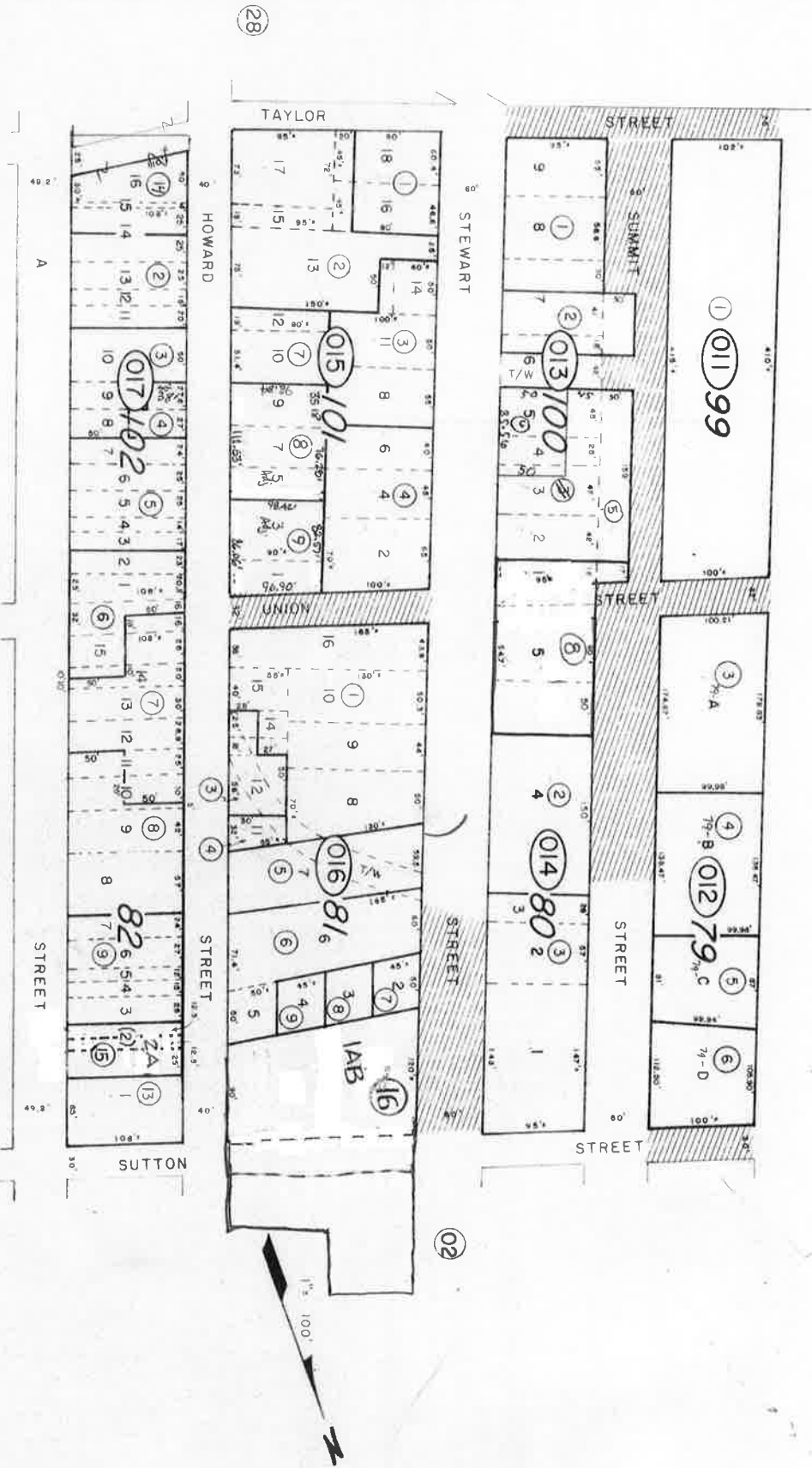


Portion of NW 1/4 of Sec. 29
T17N, R21E, M.D.B.8M.

01-01



REV/DOAS/OCT 88/DA
K/Dev 88 N.S.K
PARC/NOV 80/DL
001/DOAS/SEPT 79/06

STORY COUNTY, NEVADA
This map is prepared for the use of the Storey County Assessor for assessment and illustrative purposes ONLY. It does not represent a survey. No liability is assumed as to the sufficiency or accuracy of the data delineated herein.

Virginia City
STOREY COUNTY