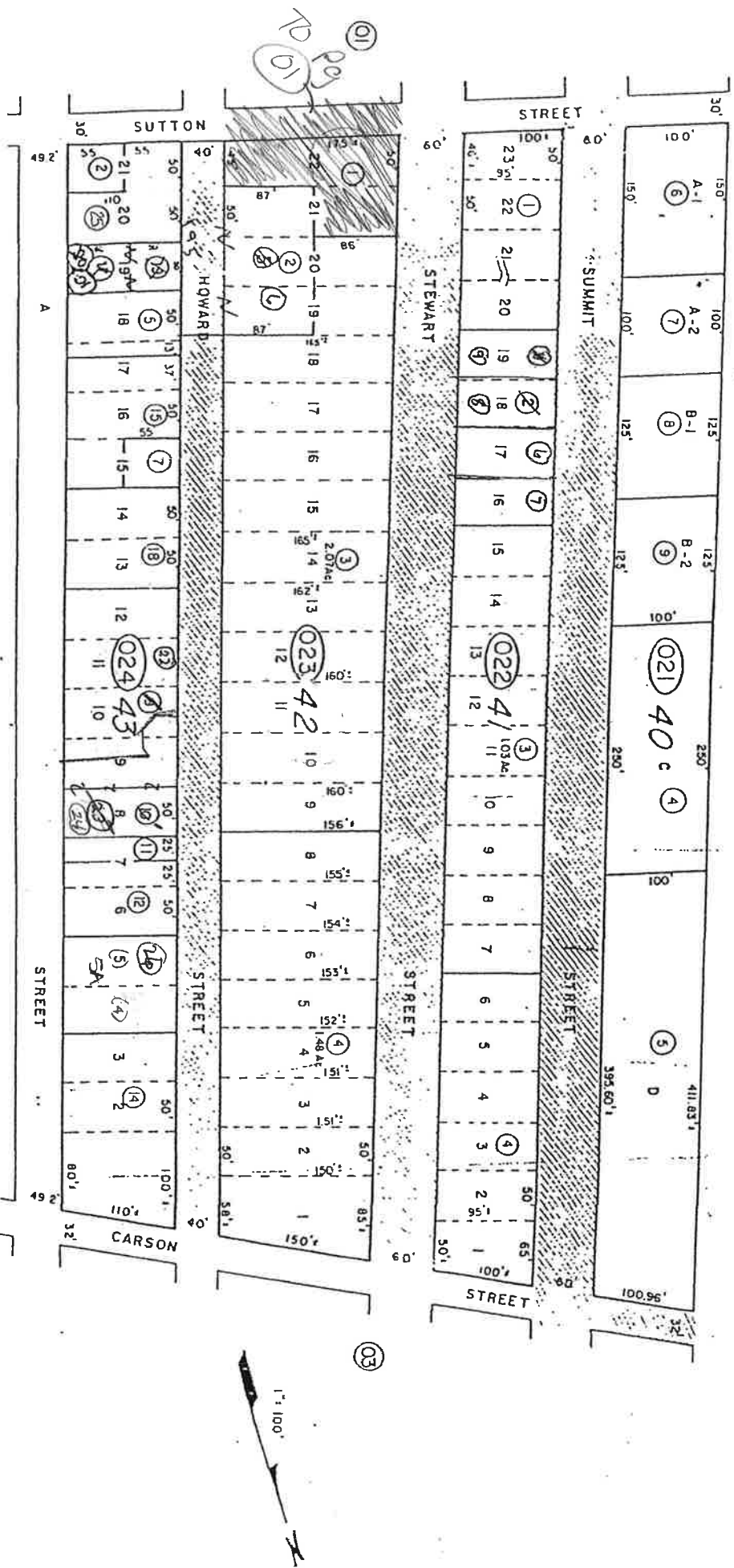


Por. of NW⁴ of Sec.29
 T17N, R21E, MDB&M



09

29

03

Virginia City

STOREY COUNTY

STOREY COUNTY, NEVADA

REV/DOAS/JUNE 92/TG
 REV/DOAS/OCT 88/DA
 CW / Dec 88/JCA
 PARC/NOV 80/DL
 DOI/DOAS/SEPT 79/DG

This map is prepared for the use of the Storey County Assessor for assessment and illustrative purposes ONLY. It does not represent a survey. No liability is assumed as to the sufficiency or accuracy of the data delineated herein.