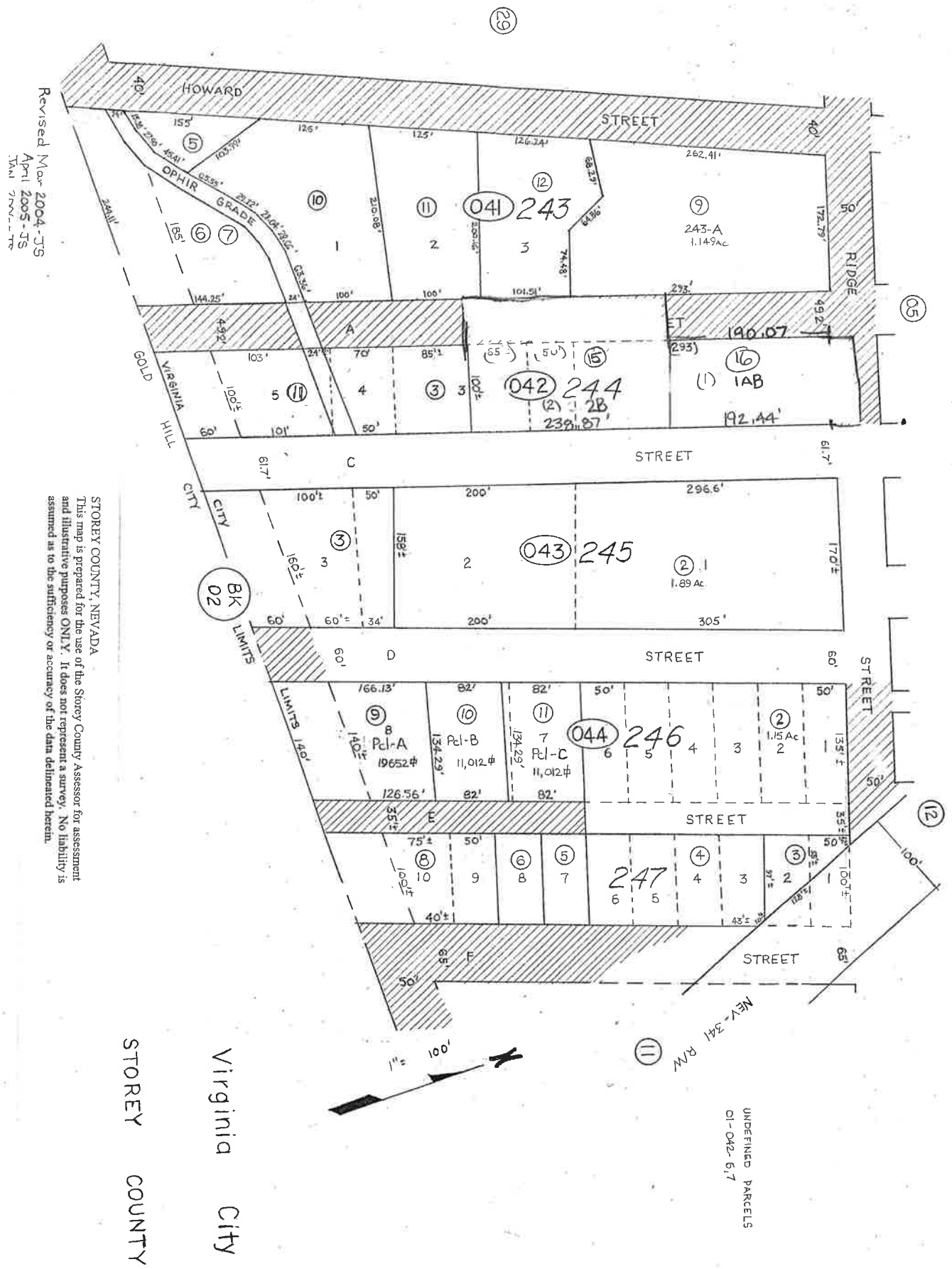


Port N1/2 NW4, Sec. 32
T17N, R21E, M.D.B. & M.

01-04



Revised Mar 2004 - JS
April 2005 - JS
TAM 777-77

STOREY COUNTY, NEVADA
This map is prepared for the use of the Storey County Assessor for assessment and illustrative purposes ONLY. It does not represent a survey. No liability is assumed as to the sufficiency or accuracy of the data delineated herein.

Virginia City
STOREY COUNTY

UNDEFINED PARCELS
01-042-6,7