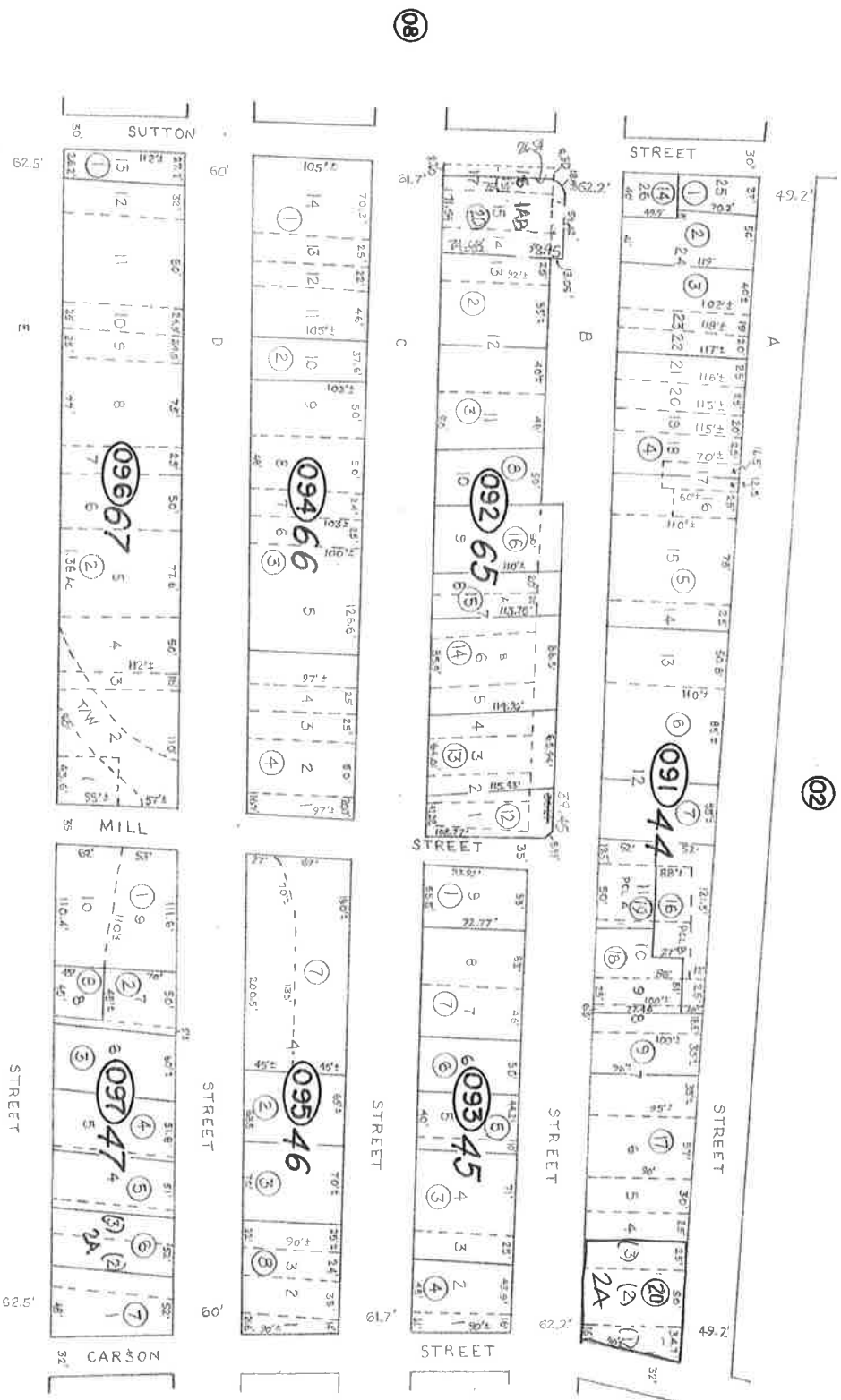


Por SE 4 NW 4 of 29, & SW 4 NE 4, Sec. 29  
 T17N, R21E, M.D.B.&M.

01-09



Revised April 2004-JS

STOREY COUNTY, NEVADA  
 This map is prepared for the use of the Storey County  
 Assessor for assessment and illustrative purposes ONLY.  
 It does not represent a survey. No liability is assumed as to the  
 sufficiency or accuracy of the data delineated herein.

Virginia City  
 STOREY COUNTY