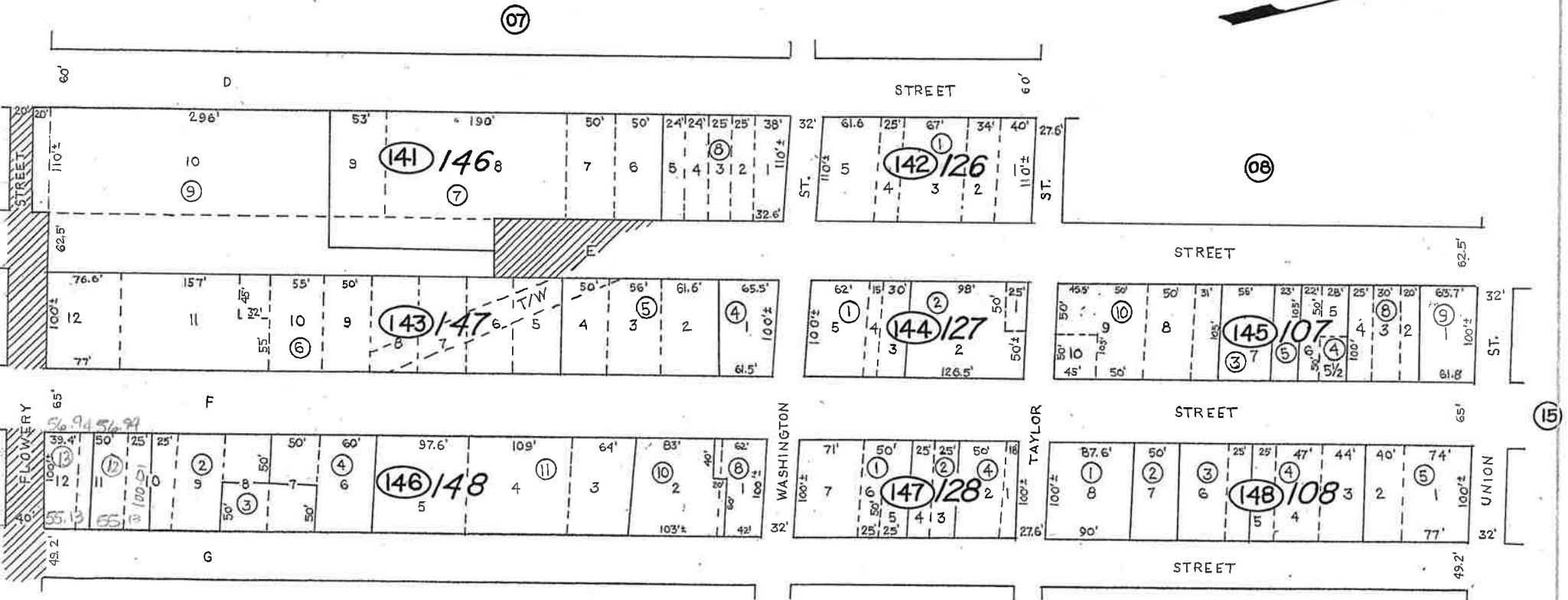


Por. NE<sup>4</sup>SW<sup>4</sup>, NW<sup>4</sup>SE<sup>4</sup>, Sec 29

T17N, R21E, M.D.B.&M.



07

08

15

18

Virginia City  
STOREY COUNTY

Revised April 2004-J3

STOREY COUNTY, NEVADA  
This map is prepared for the use of the Storey County Assessor for assessment and illustrative purposes ONLY. It does not represent a survey. No liability is assumed as to the sufficiency or accuracy of the data delineated herein.