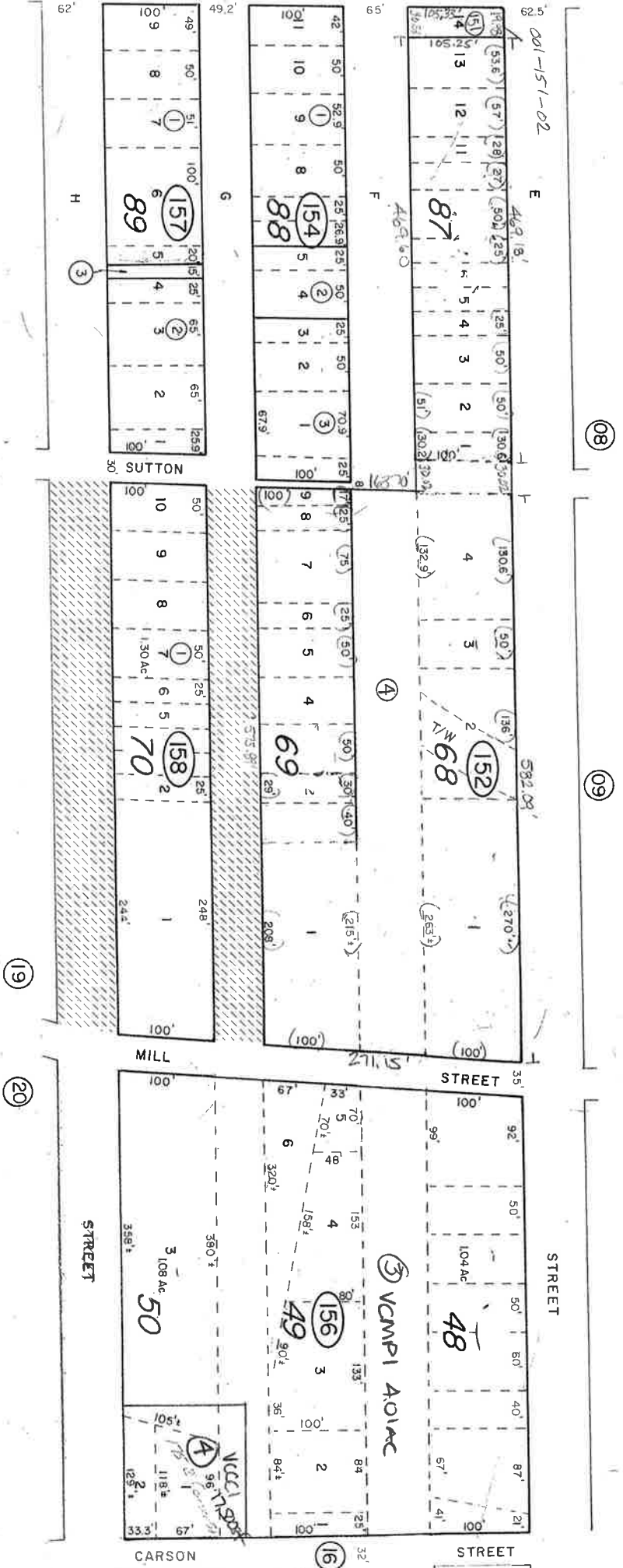


Por. of W²NE⁴ of Sec. 29
T17N, R21E, MDB&M

01-15



STORREY COUNTY, NEVADA
This map is prepared for the use of the Storey County Assessor for assessment and illustrative purposes ONLY. It does not represent a survey. No liability is assumed as to the sufficiency or accuracy of the data delineated herein.

Virginia City
STORREY COUNTY

V\DOAS\JUNE 92\TG