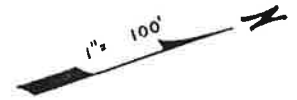
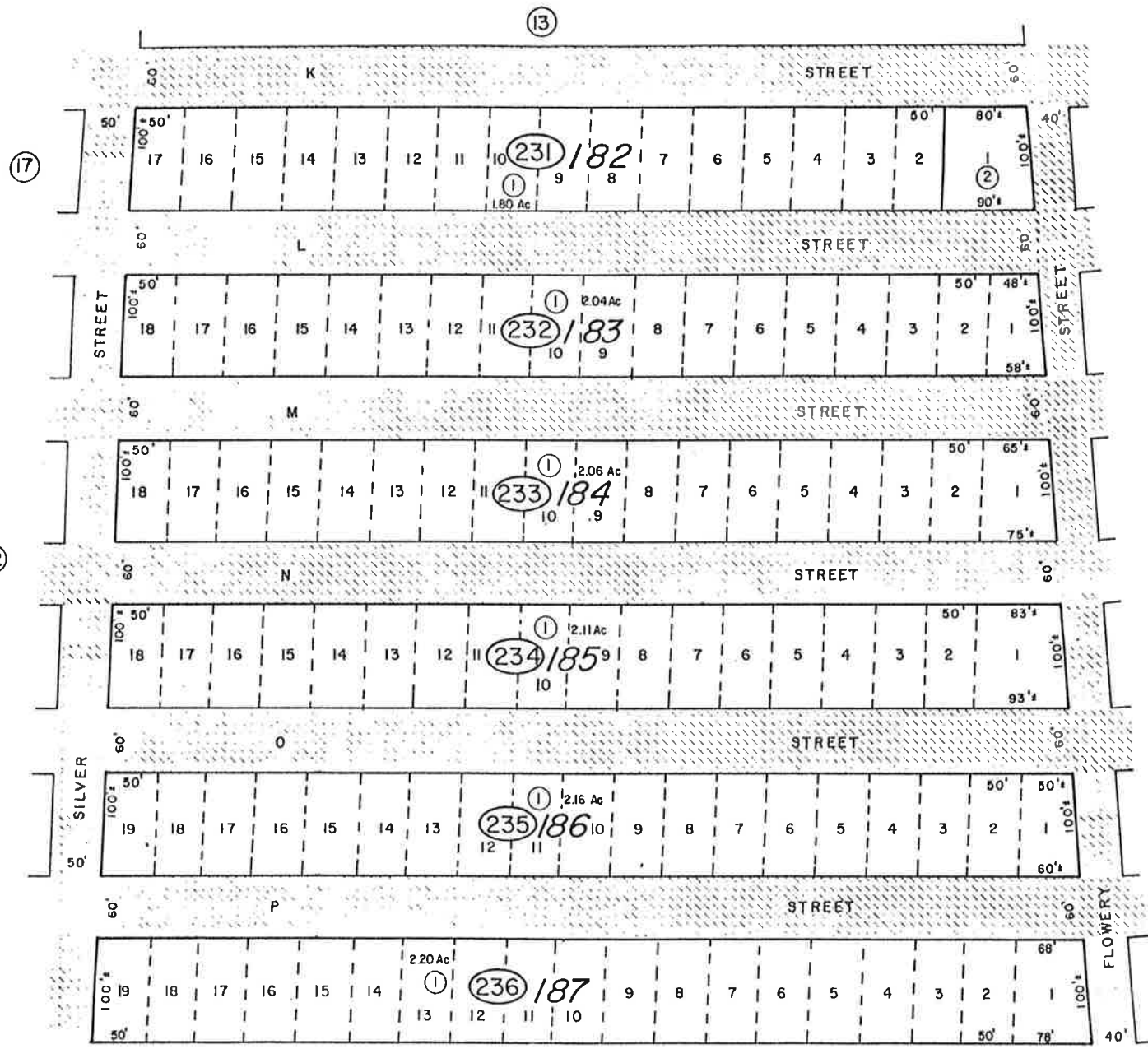


Por. of SW<sup>4</sup>SE<sup>4</sup> of Sec. 29  
T17N, R21E, M.D.B.&M.



Virginia City  
STOREY COUNTY



17

22

24

25

31

CV/DC/AS/AJA  
PARC/NOV 80/DL  
DOT/DOAS/SEPT 79/DG

STOREY COUNTY, NEVADA

This map is prepared for the use of the Storey County Assessor for assessment and illustrative purposes ONLY. It does not represent a survey. No liability is assumed as to the sufficiency or accuracy of the data delineated herein.