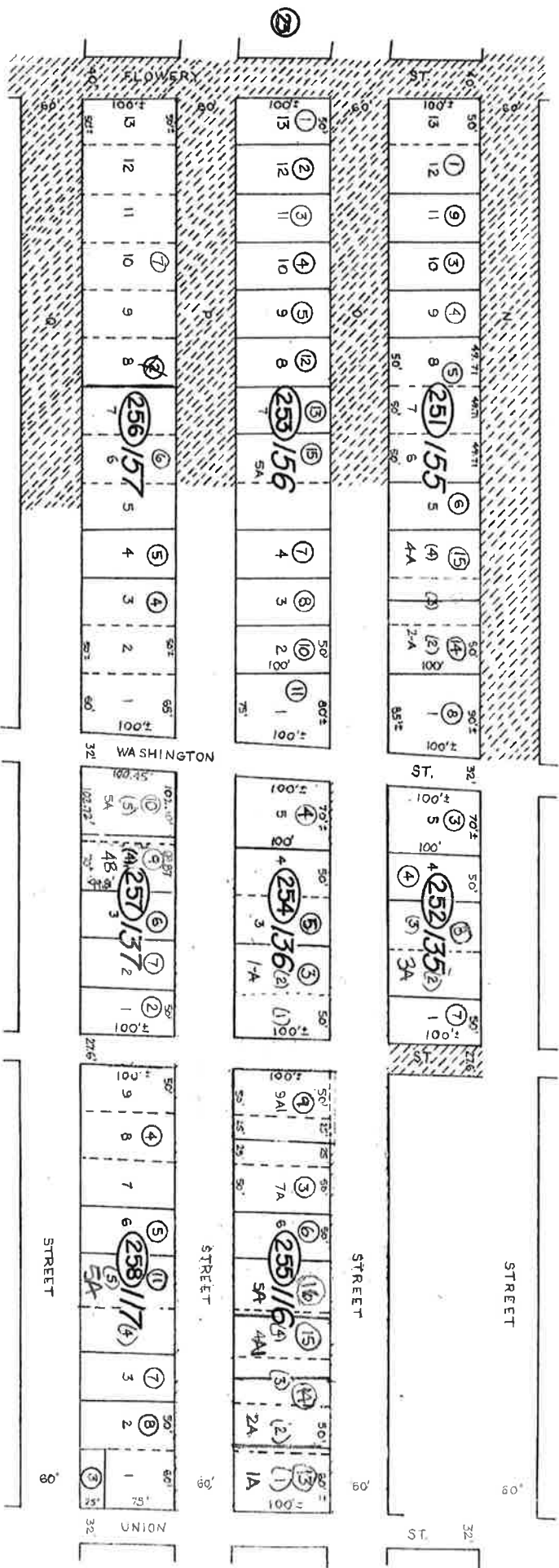
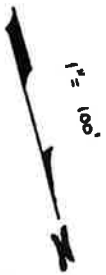


Por NE 4 SE 4, Sec 29
T17N, R21E, MDBAM.

01-25



(31)

1-259-01 FLOATING PARCEL
EAST OF WASHINGTON
(MORRELL TRACT)

(32)

Virginia City
STOREY COUNTY

This map is prepared for the use of the Storey County Assessor for assessment and illustrative purposes ONLY. It does not represent a survey. No liability is assumed as to the sufficiency or accuracy of the data delineated herein.

Revised Feb 2005/13