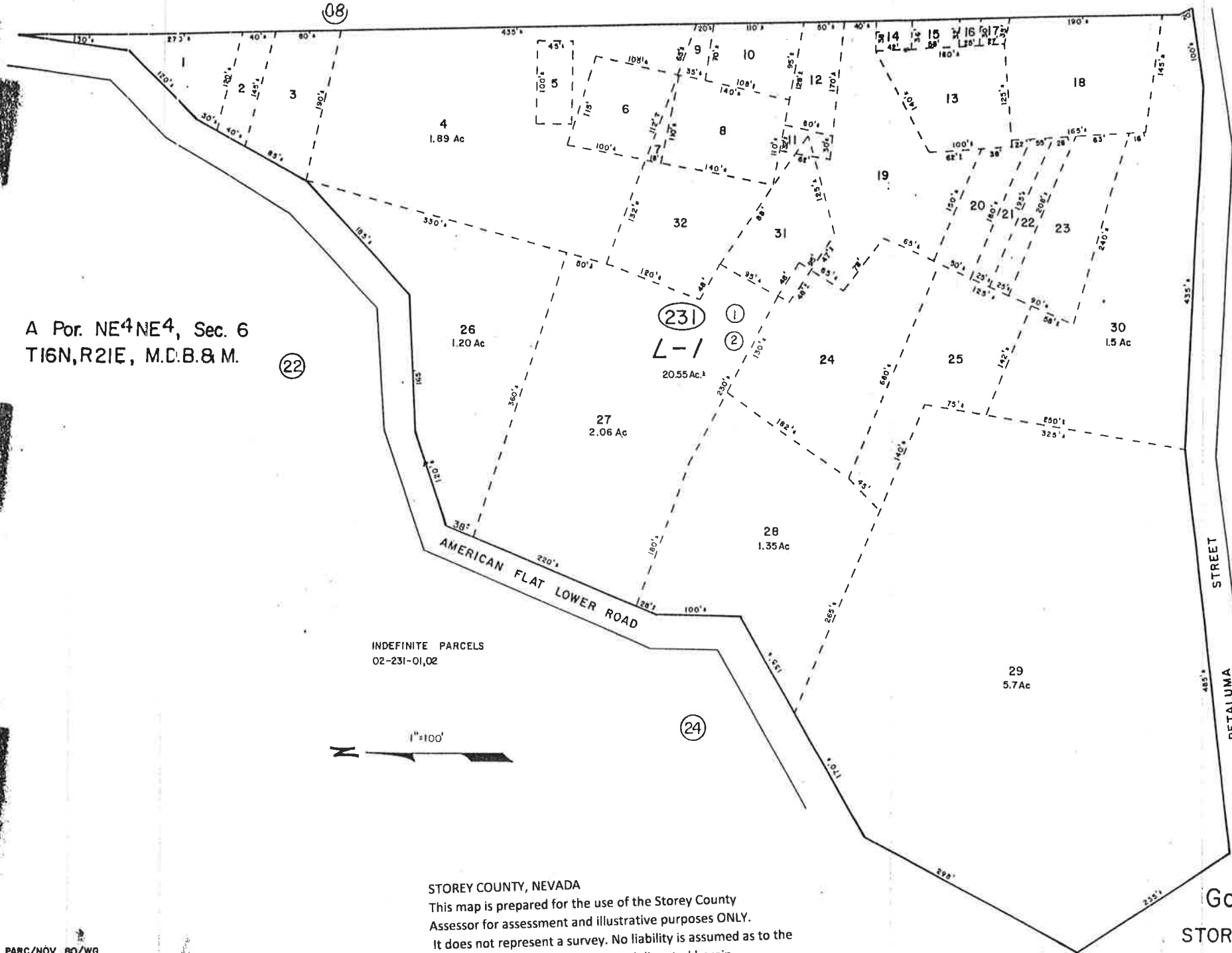


A Por. NE⁴NE⁴, Sec. 6
T16N,R21E, M.D.B.&M.



(22)

(231)

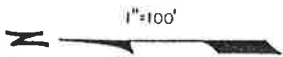
(1)

(2)

(09)

(24)

INDEFINITE PARCELS
02-231-01,02



STOREY COUNTY, NEVADA

This map is prepared for the use of the Storey County Assessor for assessment and illustrative purposes ONLY. It does not represent a survey. No liability is assumed as to the sufficiency or accuracy of the data delineated herein.

Gold Hill
STOREY COUNTY