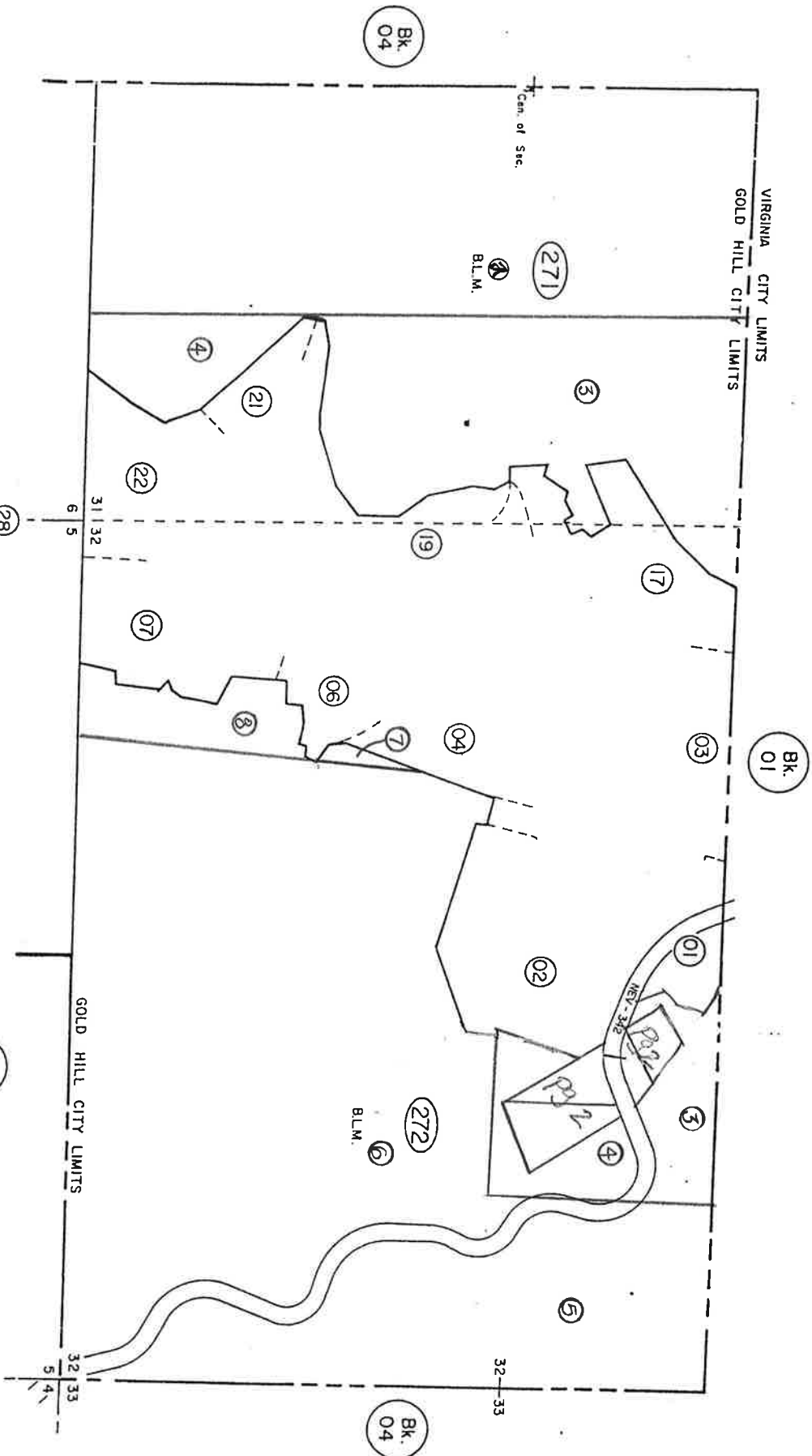


S<sup>2</sup>NE<sup>4</sup>, SE<sup>4</sup>, Sec. 31 & S<sup>2</sup>N<sup>2</sup>, S<sup>2</sup>, Sec. 32  
 T17N, R21E, M.D.B.8M.

02-27



STOREY COUNTY, NEVADA  
 This map is prepared for the use of the Storey County  
 Assessor for assessment and illustrative purposes ONLY.  
 It does not represent a survey. No liability is assumed as to the  
 sufficiency or accuracy of the data delineated herein.

PARC/NOV.80/WG  
 DOT/00A3/NOV.80/OL

Gold Hill  
 STOREY COUNTY