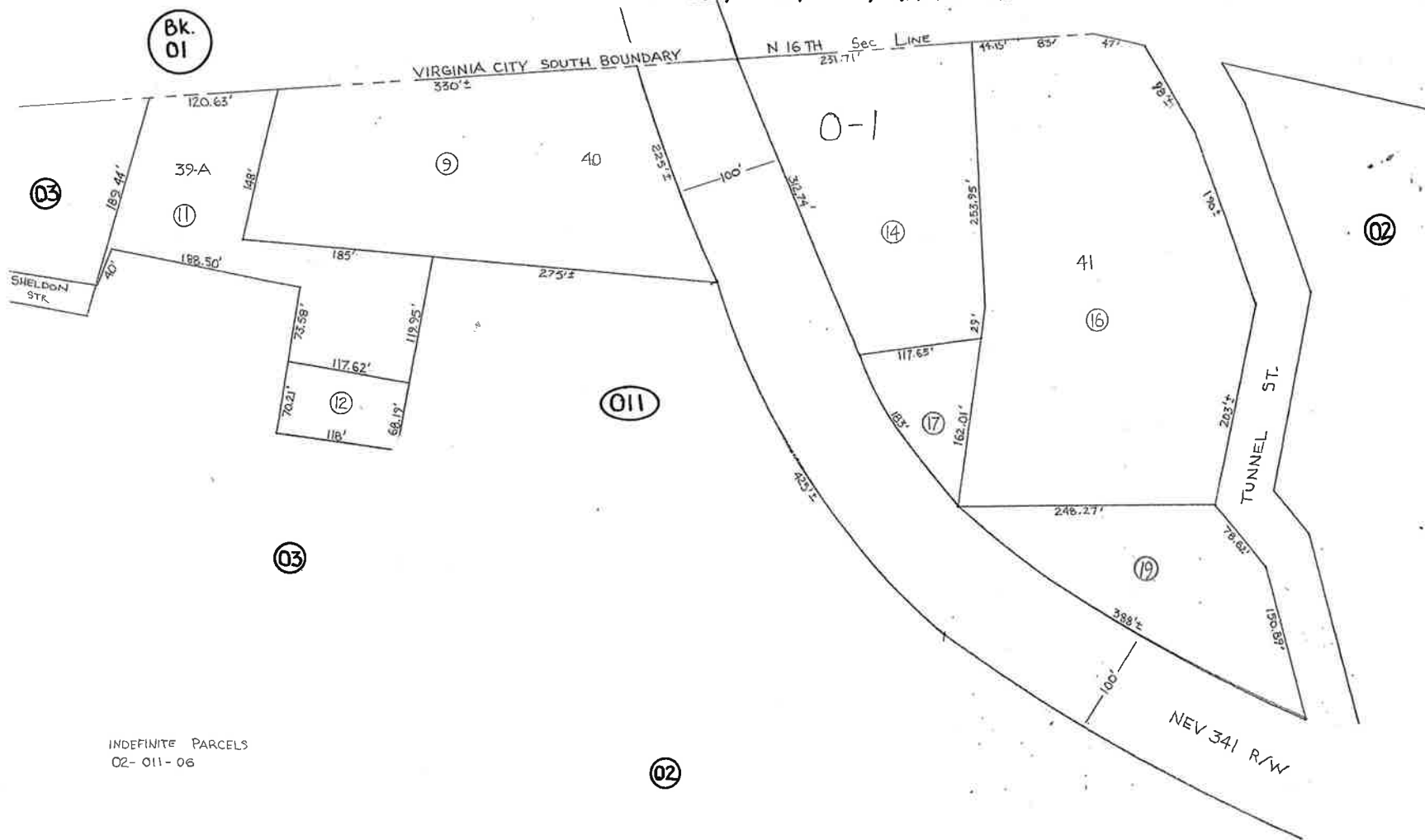


A Por. of N<sup>2</sup>S<sup>2</sup>NW<sup>4</sup> & NW<sup>4</sup>SW<sup>4</sup>NE<sup>4</sup>  
Sec 32, T17N, R21E, M.D.B. & M.



INDEFINITE PARCELS  
02-011-06

Revised - May 2005 - J3

STOREY COUNTY, NEVADA  
This map is prepared for the use of the Storey County Assessor for assessment and illustrative purposes ONLY. It does not represent a survey. No liability is assumed as to the sufficiency or accuracy of the data delineated herein.

Gold Hill  
STOREY COUNTY