

A Por. S2SE4NW4, SW4NE4, N2NE4SW4 & NW4NW4SE4, Sec. 32, T7N, R2E, M.D.B.&M.

NOT TO SCALE

NOT TO SCALE

Bk. 01

VIRGINIA CITY SOUTH BOUNDARY

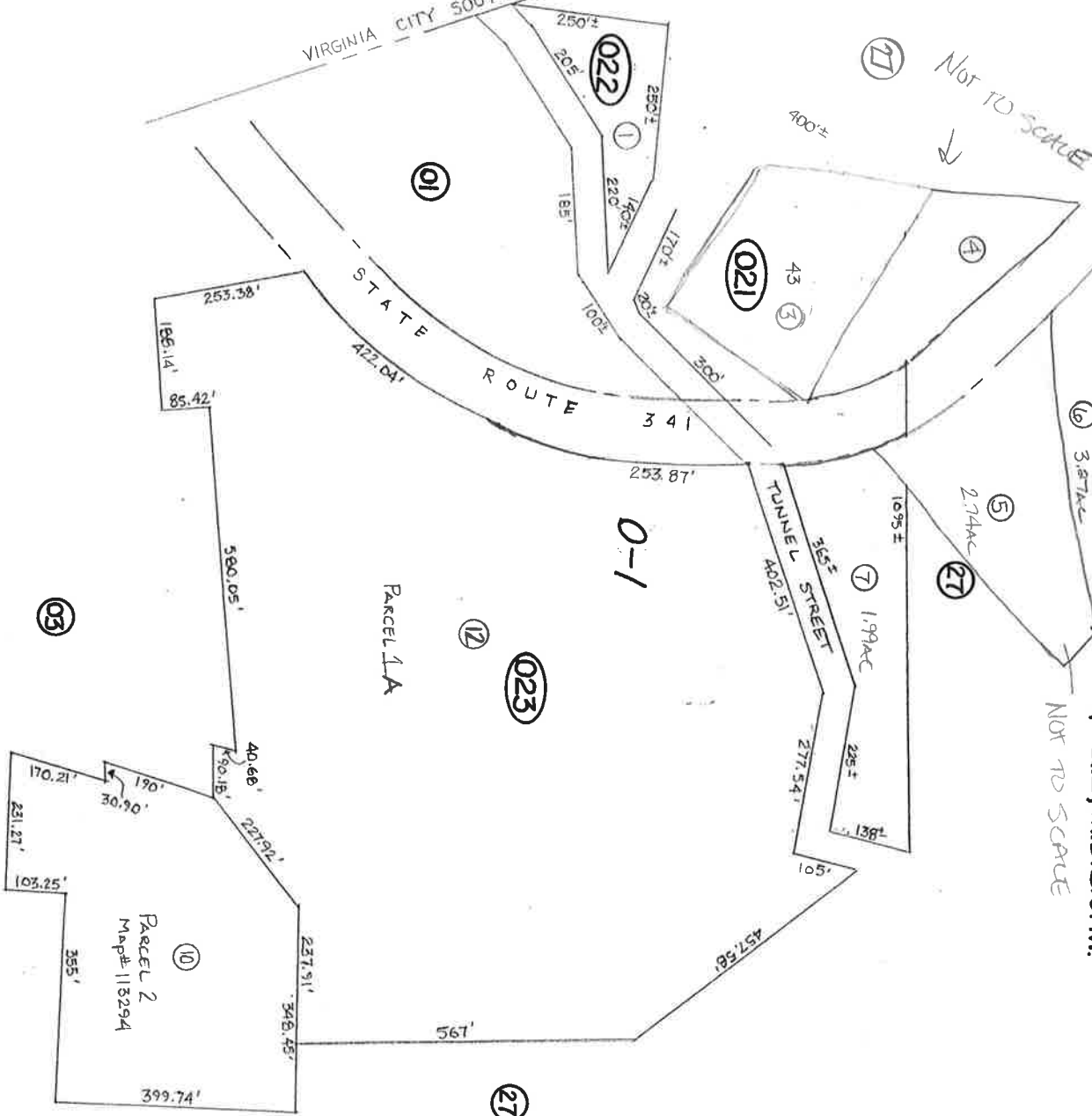
STATE ROUTE 422.04'

TUNNEL STREET

0-1

PARCEL 1A

Parcel 2
Map# 113294



STOREY COUNTY, NEVADA
This map is prepared for the use of the Storey County Assessor for assessment and illustrative purposes ONLY. It does not represent a survey. No liability is assumed as to the sufficiency or accuracy of the data delineated herein.

Gold Hill
STOREY COUNTY