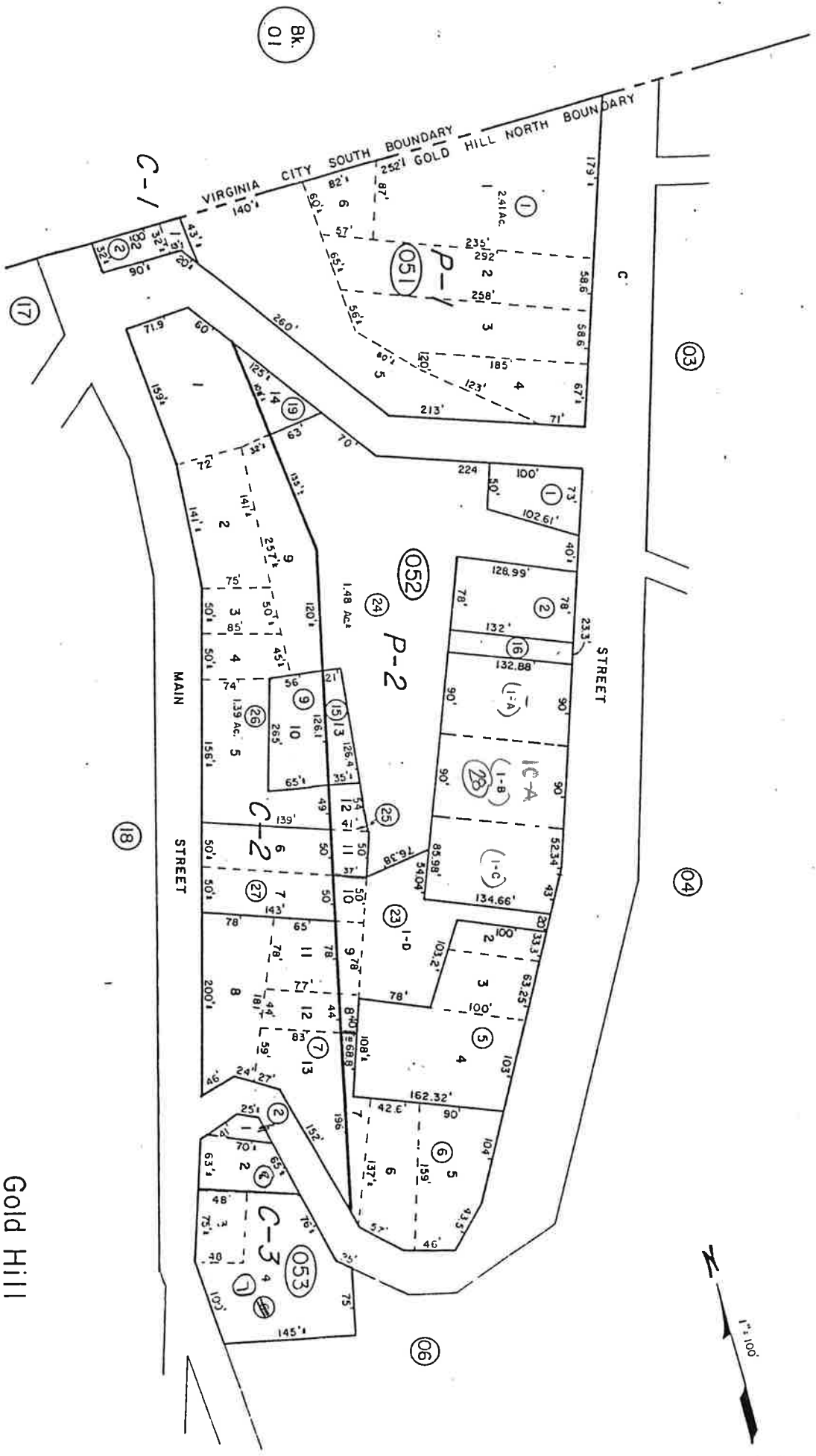


A Portion SW4NW4 Sec 32
T17N, R21E, M.D.B & M



REV/DOAS/JUNE 92/TG
REV/DOAS/DEC 98/DA
PARC/NOVB/WG
DOT/DOAS/SEPT 79/DL

STOREY COUNTY, NEVADA
This map is prepared for the use of the Storey County Assessor for assessment and illustrative purposes ONLY. It does not represent a survey. No liability is assumed as to the sufficiency or accuracy of the data delineated herein.

Gold Hill
STOREY COUNTY