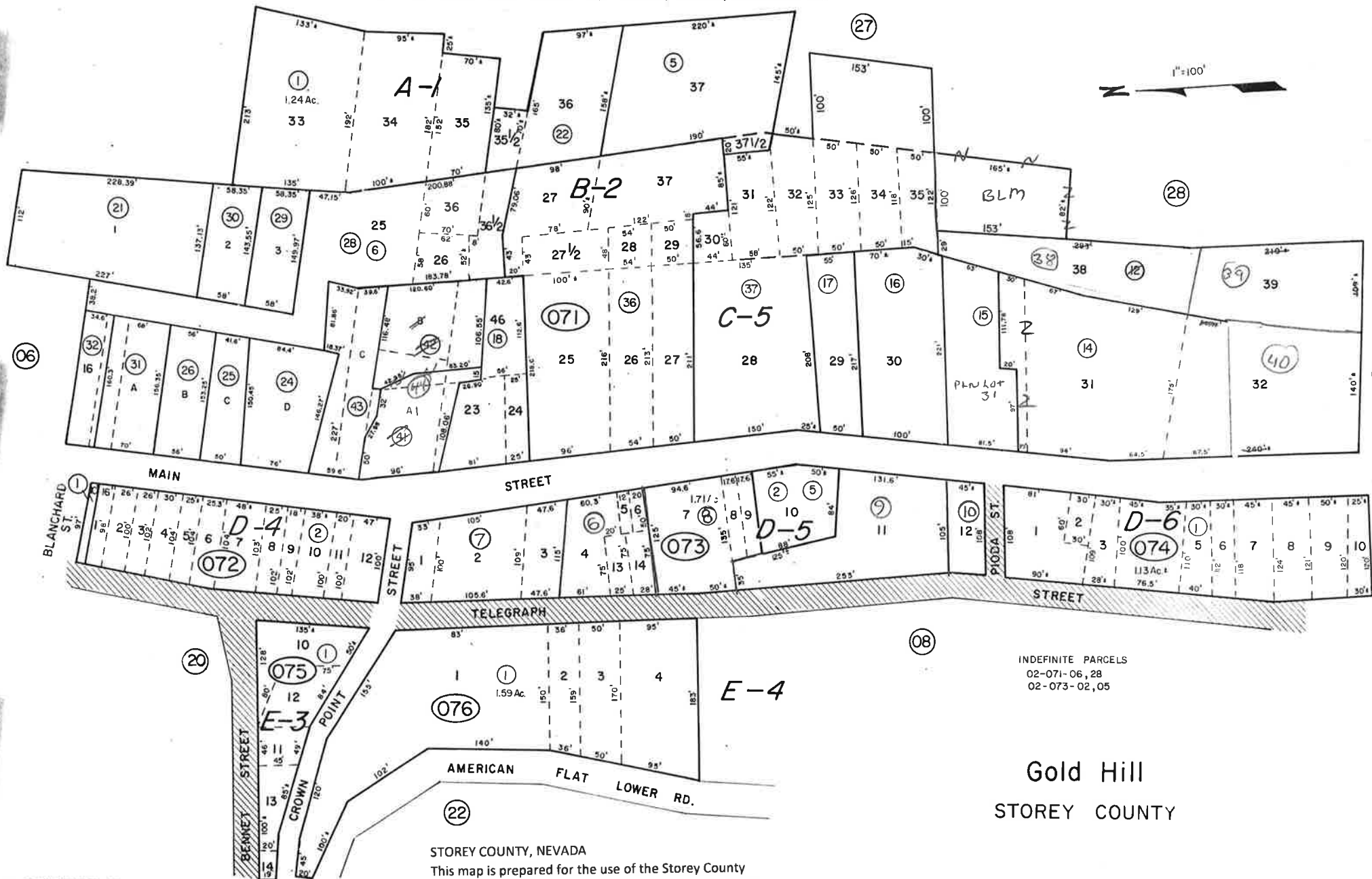


A Por. SW⁴SW⁴, Sec 32, T17N, R21E
 A Por. NW⁴NW⁴, Sec 5, T16N, R21E, M.D.B. & M.

02-07



INDEFINITE PARCELS
 02-071-06, 28
 02-073-02, 05

Gold Hill
 STOREY COUNTY

STOREY COUNTY, NEVADA

This map is prepared for the use of the Storey County Assessor for assessment and illustrative purposes ONLY. It does not represent a survey. No liability is assumed as to the sufficiency or accuracy of the data delineated herein.