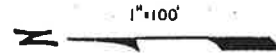
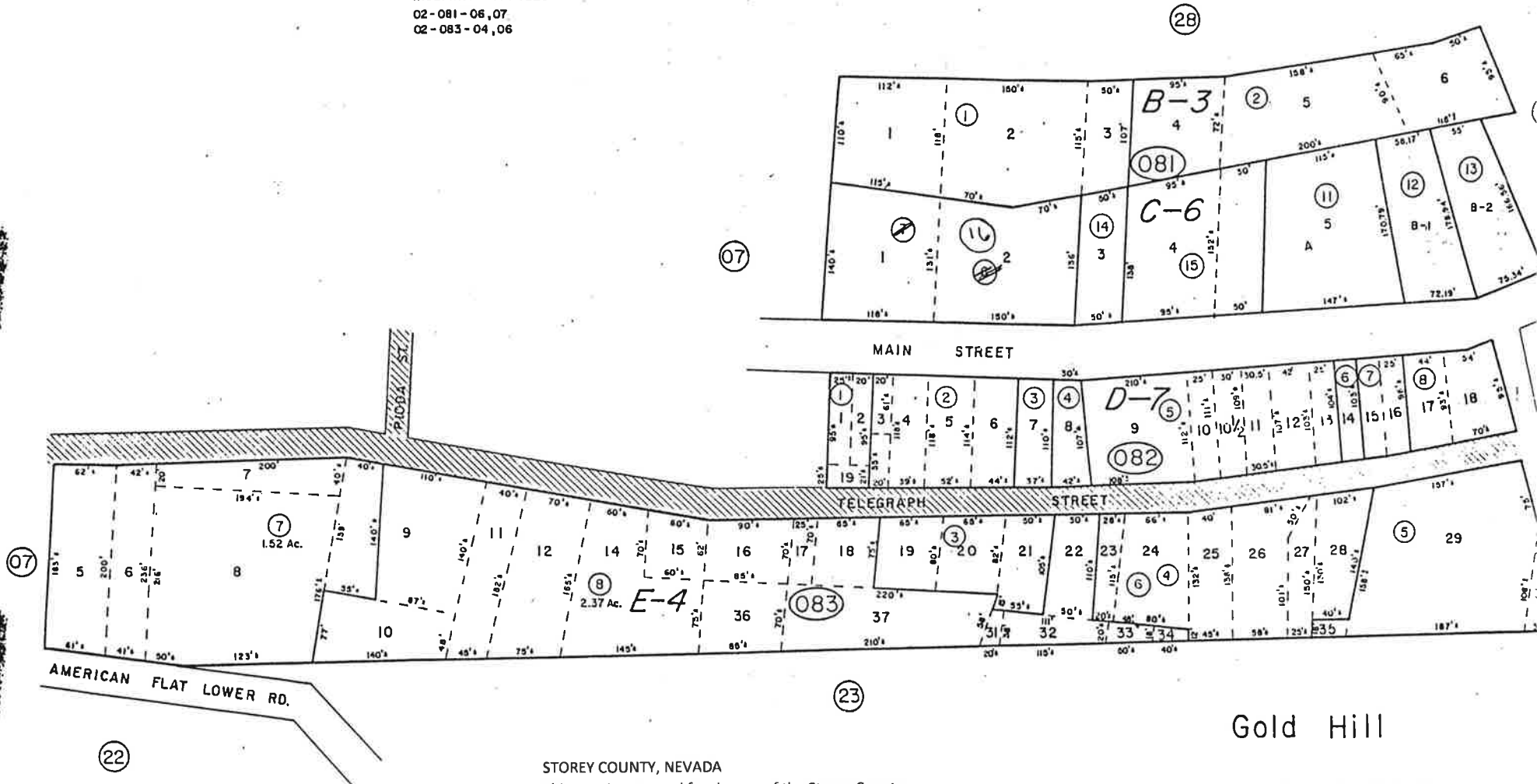


A Por SW4SW4SW4 Sec. 32, T17N, R21E &
A Por NW4NW4 Sec. 5, T16N, R21E M.D.B.&M.



INDEFINITE PARCELS
02-081-06,07
02-083-04,06



Gold Hill

STOREY COUNTY

STOREY COUNTY, NEVADA
This map is prepared for the use of the Storey County Assessor for assessment and illustrative purposes ONLY. It does not represent a survey. No liability is assumed as to the sufficiency or accuracy of the data delineated herein.

REV/DOAS/MAY 92/TG
REV/DOAS/JAN 89/DA
PARC/NOV. 80/WG
DOT/DOAS/SEPT 79/DL