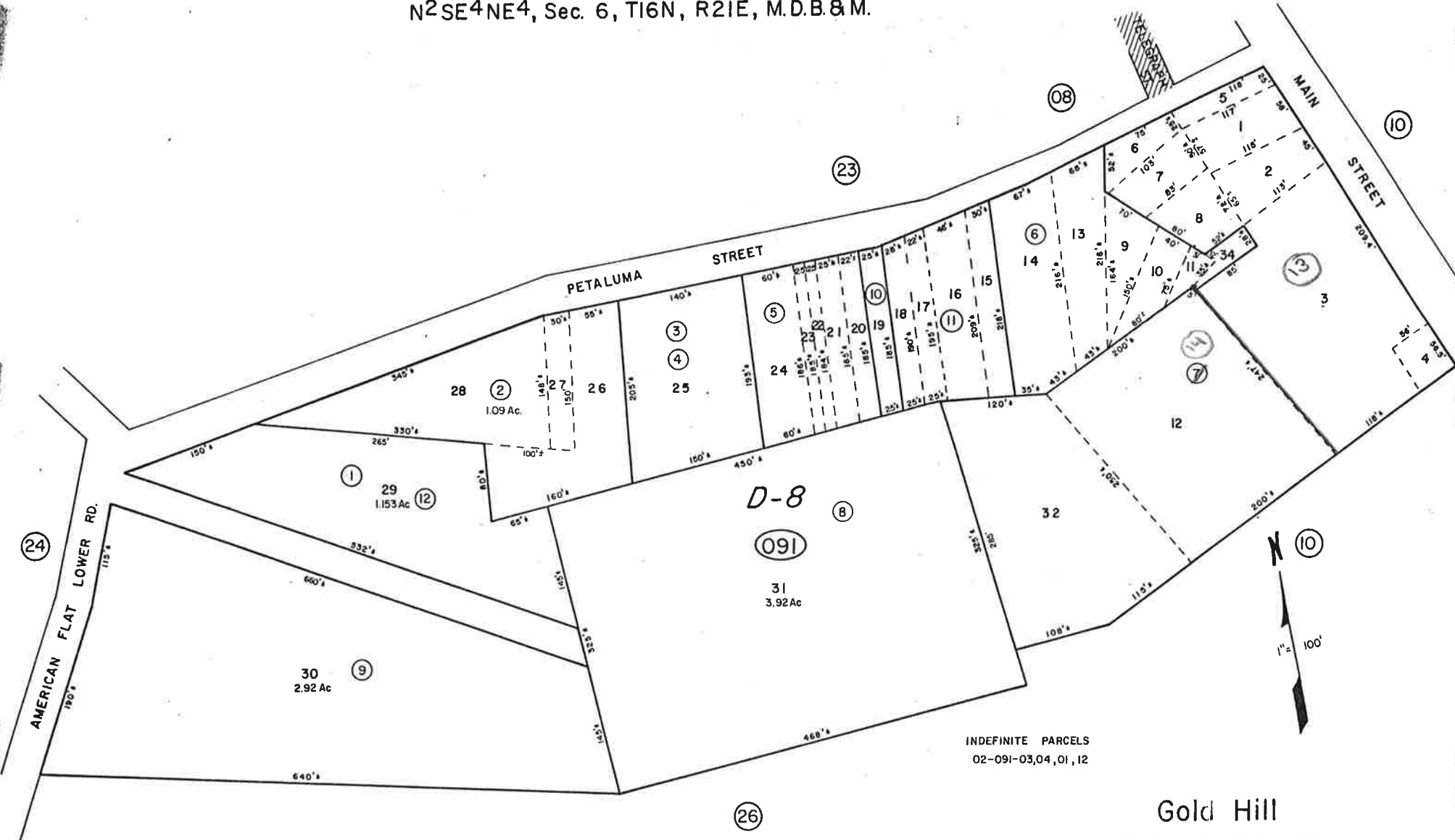


A Por. S2NW4NW4, SW4SW4NW4, Sec. 5 & N2SE4NE4, Sec. 6, T16N, R21E, M.D.B. & M.



INDEFINITE PARCELS
02-091-03,04,01,12

Gold Hill
STOREY COUNTY

STOREY COUNTY, NEVADA
This map is prepared for the use of the Storey County Assessor for assessment and illustrative purposes ONLY. It does not represent a survey. No liability is assumed as to the sufficiency or accuracy of the data delineated herein.