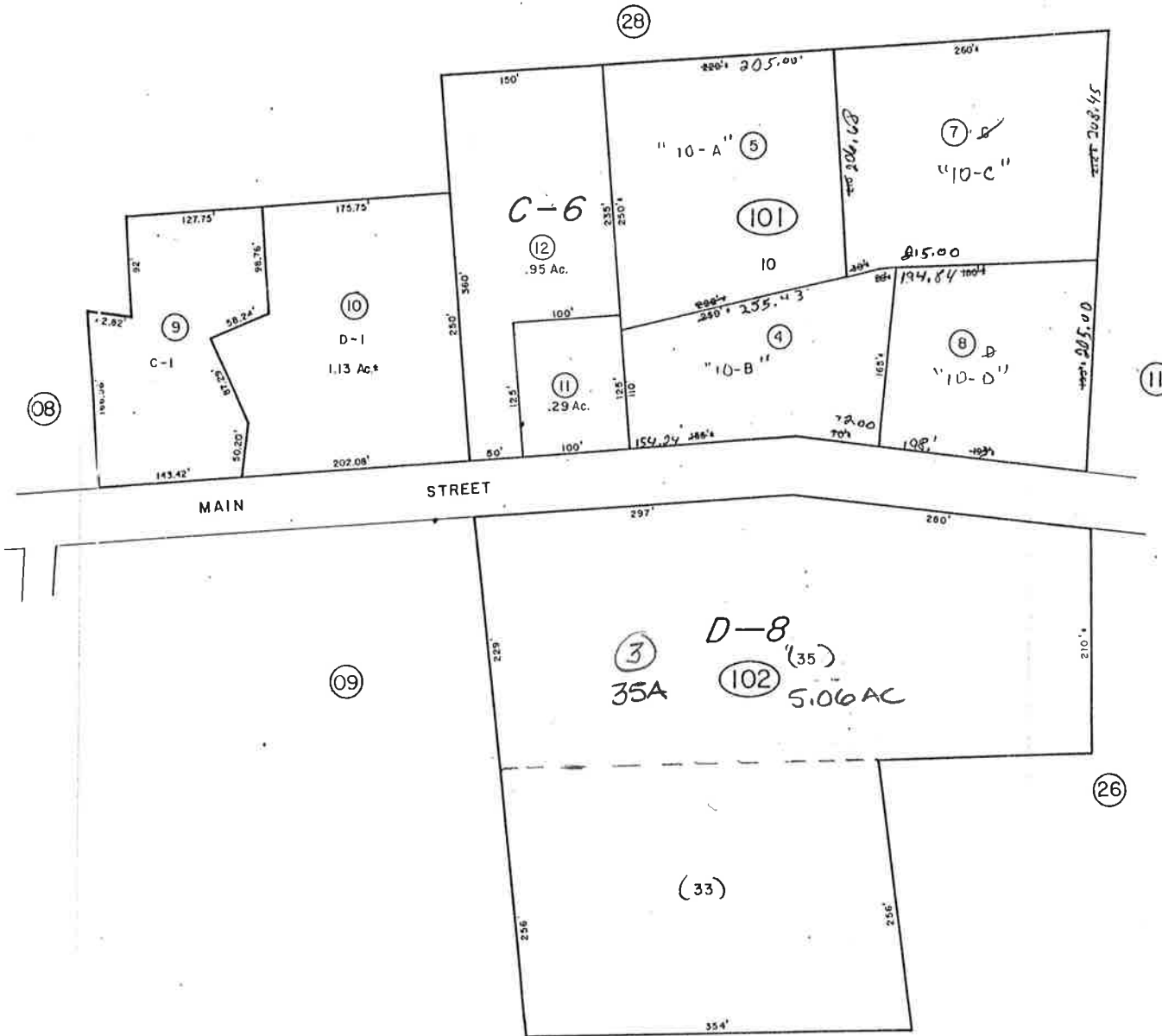


A Por. S¹/₄NW⁴NW⁴ & SW⁴NW⁴, Sec 5
T16N, R21E, M. D. B. & M.

02-10



Gold Hill

STOREY COUNTY

STOREY COUNTY, NEVADA

This map is prepared for the use of the Storey County Assessor for assessment and illustrative purposes ONLY.

It does not represent a survey. No liability is assumed as to the sufficiency or accuracy of the data delineated herein.