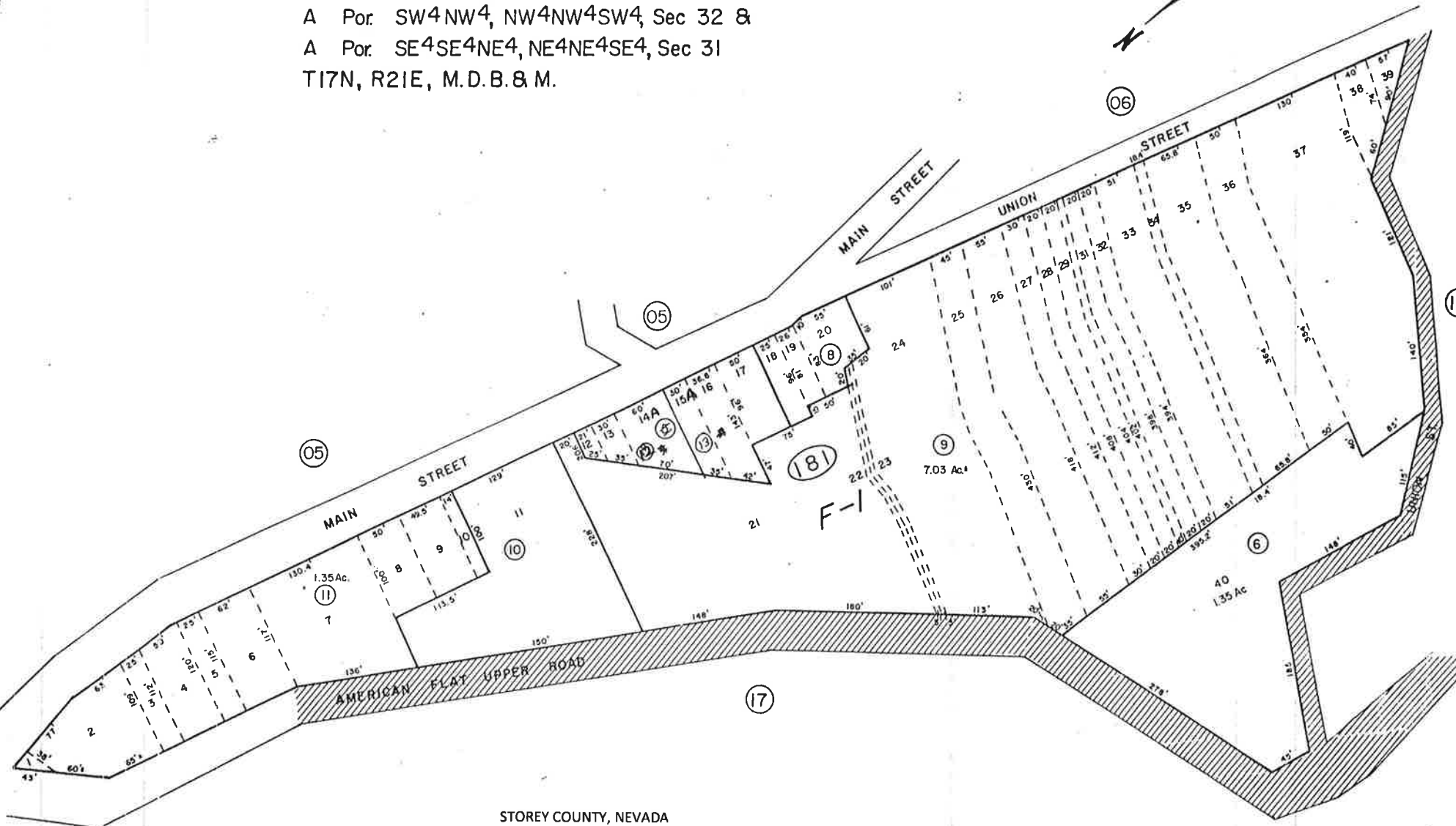
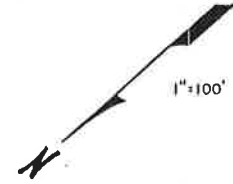


A Por. SW4NW4, NW4NW4SW4, Sec 32 &  
A Por. SE4SE4NE4, NE4NE4SE4, Sec 31  
T17N, R21E, M.D.B. & M.



STOREY COUNTY, NEVADA

This map is prepared for the use of the Storey County Assessor for assessment and illustrative purposes ONLY. It does not represent a survey. No liability is assumed as to the sufficiency or accuracy of the data delineated herein.

Gold Hill  
STOREY COUNTY