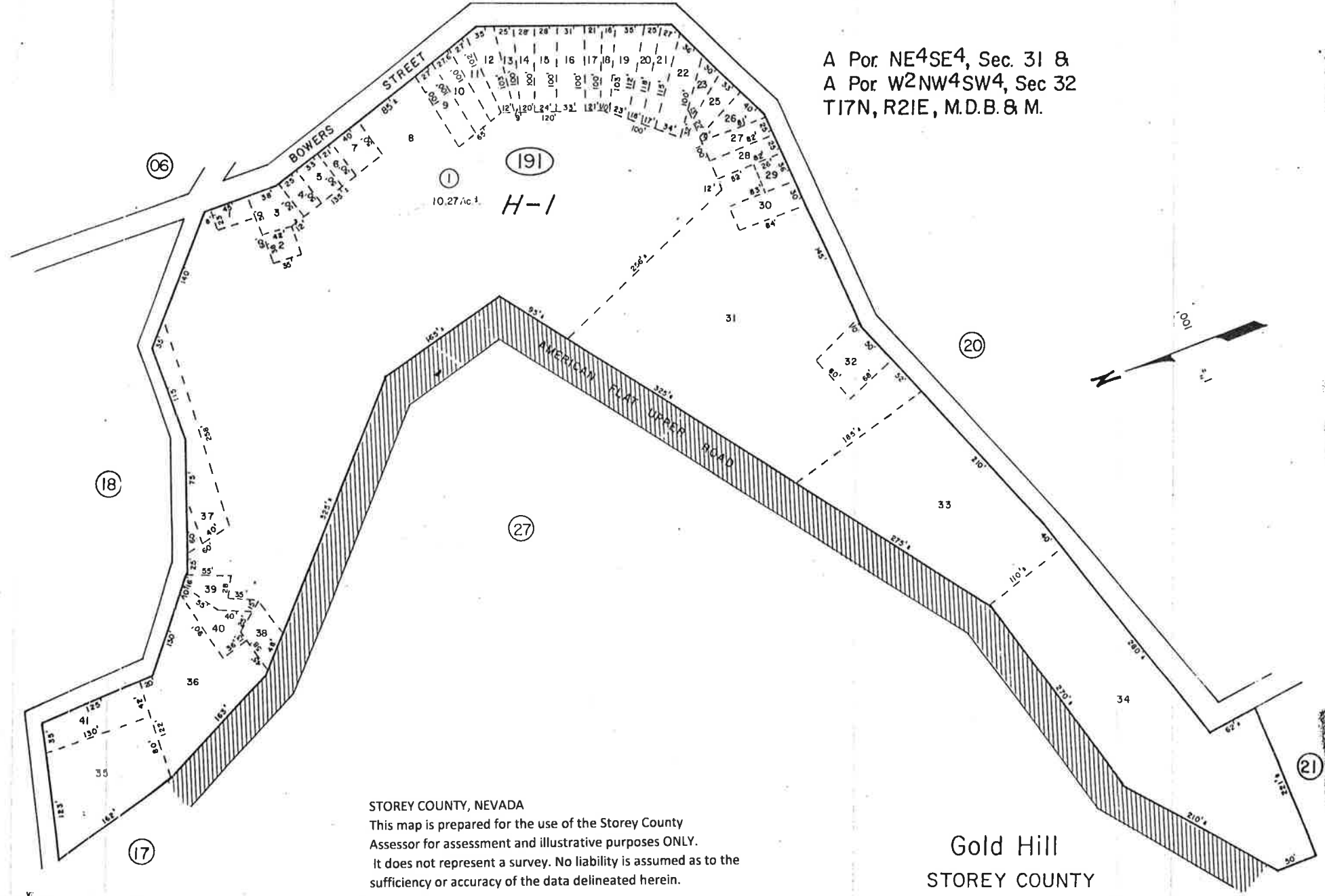


A Por. NE⁴SE⁴, Sec. 31 &
A Por. W²NW⁴SW⁴, Sec 32
T17N, R21E, M.D.B. & M.



STOREY COUNTY, NEVADA
 This map is prepared for the use of the Storey County Assessor for assessment and illustrative purposes ONLY.
 It does not represent a survey. No liability is assumed as to the sufficiency or accuracy of the data delineated herein.

Gold Hill
 STOREY COUNTY