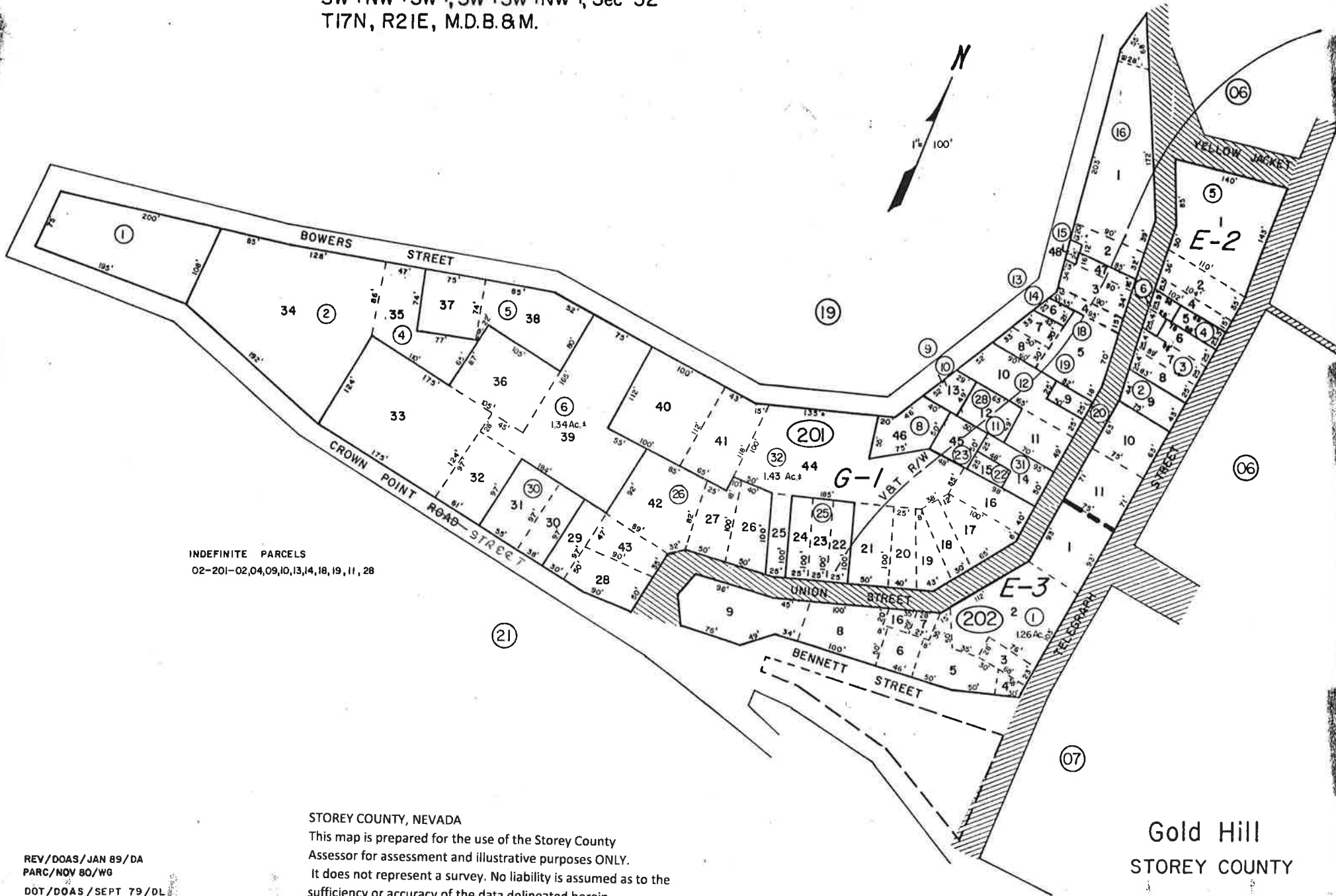


A Por. N²SE⁴SE⁴, Sec 31,
SW⁴NW⁴SW⁴, SW⁴SW⁴NW⁴, Sec 32
T17N, R21E, M.D.B. & M.



INDEFINITE PARCELS
02-201-02, 04, 09, 10, 13, 14, 18, 19, 11, 28

STOREY COUNTY, NEVADA
This map is prepared for the use of the Storey County Assessor for assessment and illustrative purposes ONLY. It does not represent a survey. No liability is assumed as to the sufficiency or accuracy of the data delineated herein.