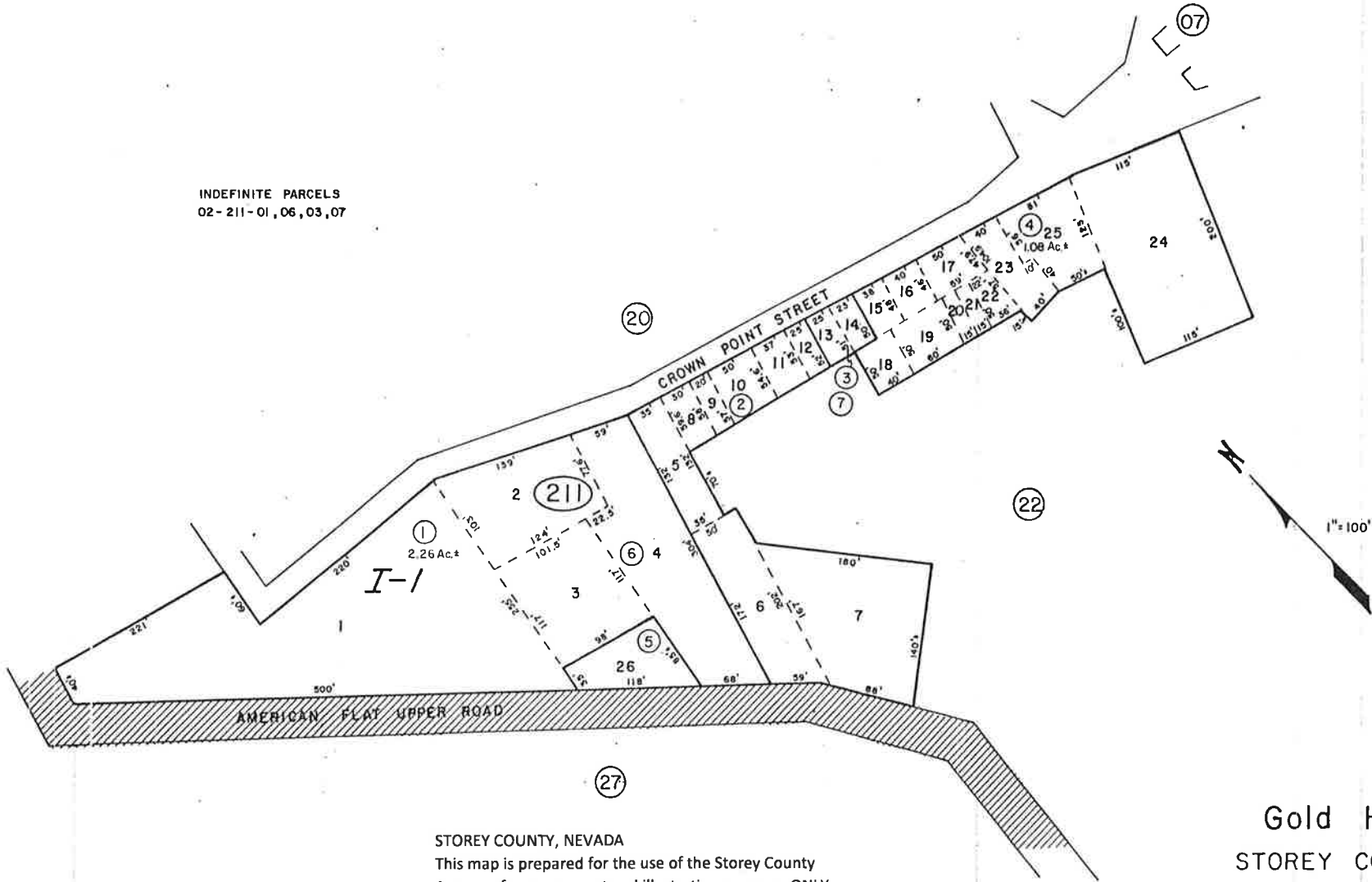


A Por. N2SE4SE4, Sec 31
A Por. NW4SW4SW4, Sec 32
T17N, R21E, M.D.B. & M.

INDEFINITE PARCELS
02-211-01, 06, 03, 07



STOREY COUNTY, NEVADA

This map is prepared for the use of the Storey County Assessor for assessment and illustrative purposes ONLY.

It does not represent a survey. No liability is assumed as to the sufficiency or accuracy of the data delineated herein.

Gold Hill
STOREY COUNTY