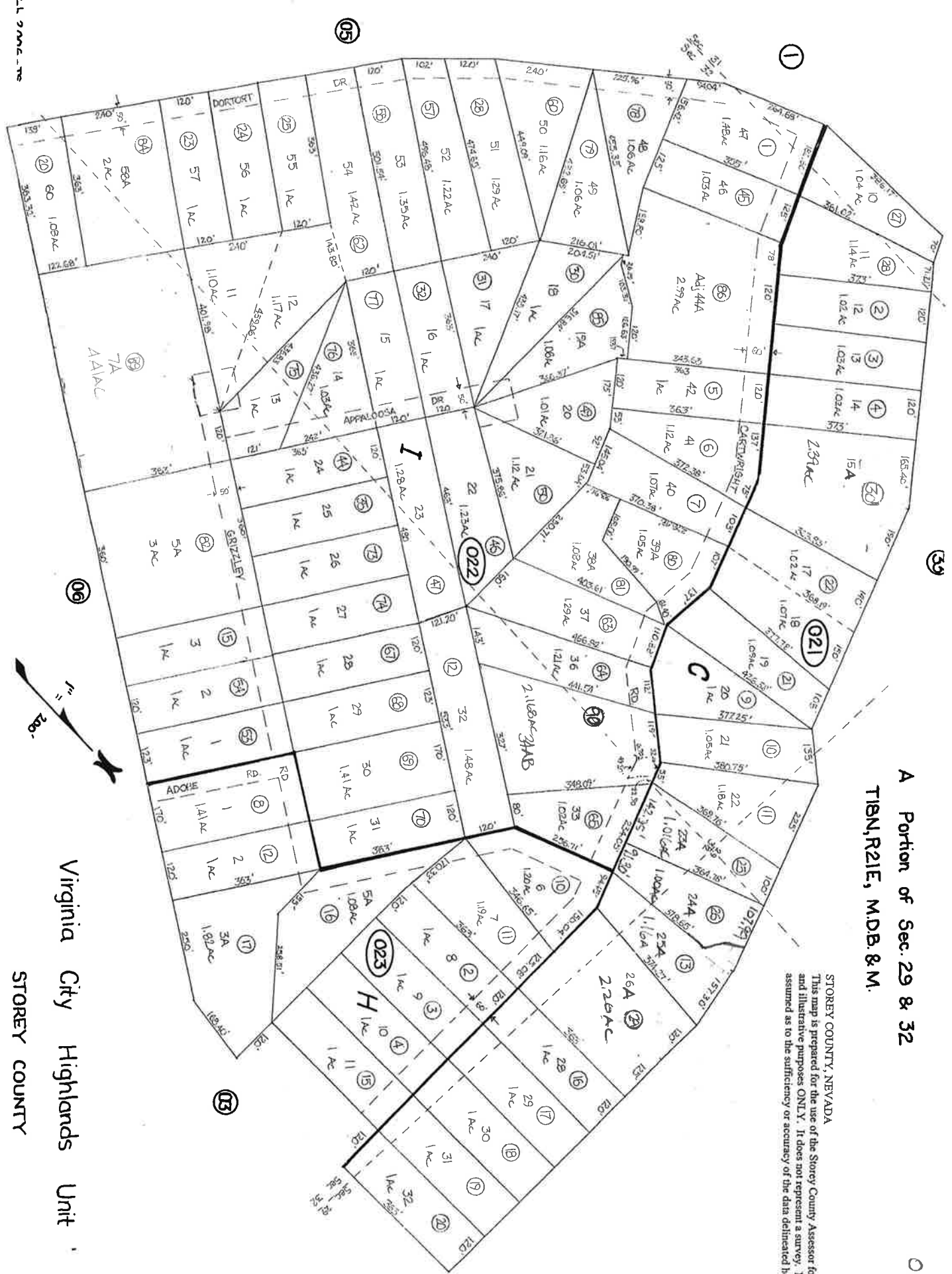


A Portion of Sec. 29 & 32  
T18N, R21E, MDB. & M.

STOREY COUNTY, NEVADA  
This map is prepared for the use of the Storey County Assessor for assessment and illustrative purposes ONLY. It does not represent a survey. No liability is assumed as to the sufficiency or accuracy of the data delineated herein.



Virginia City Highlands Unit  
STOREY COUNTY



11 2 2004 - 70