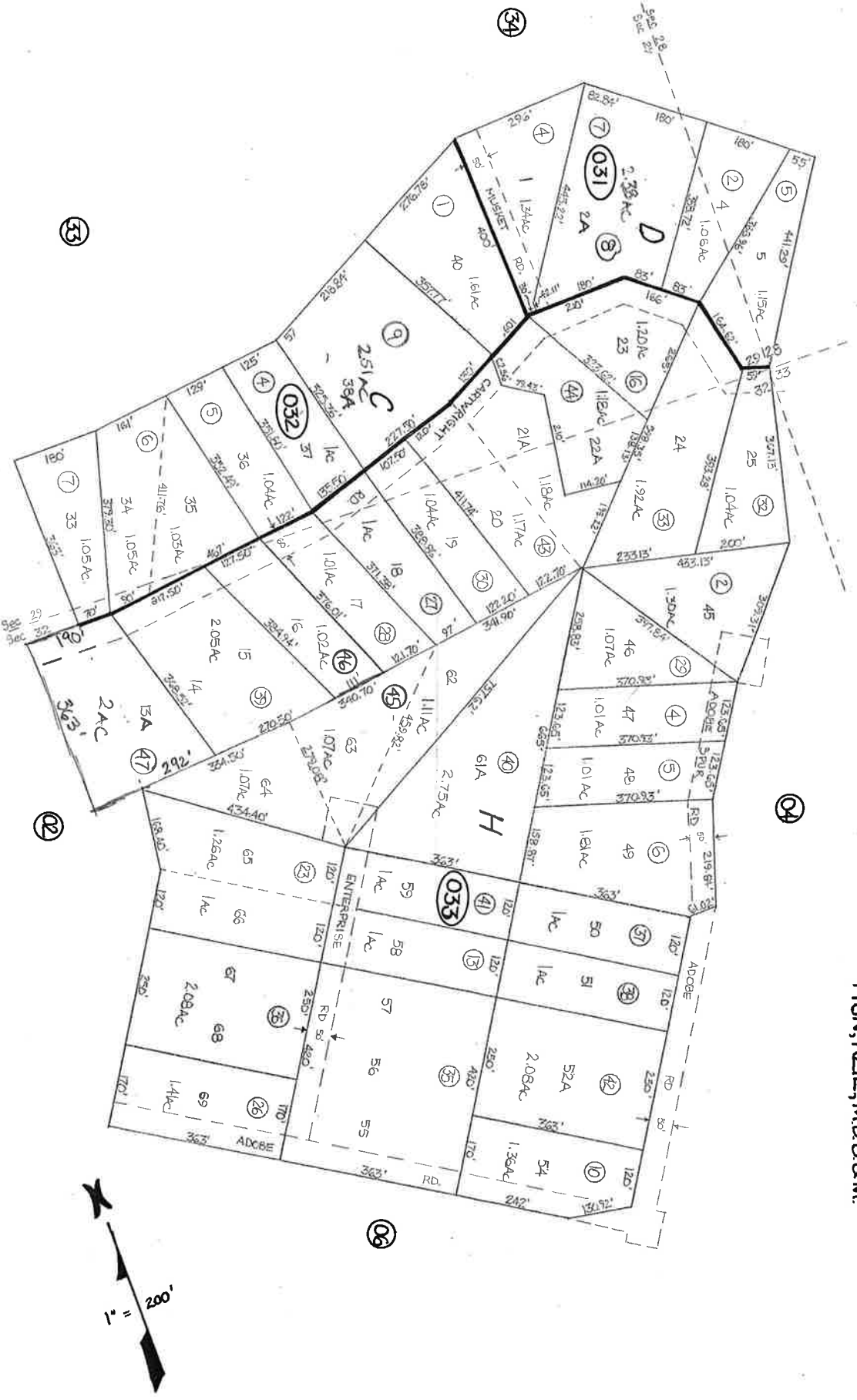


A Portion of Sec 28, 29, 32 & 33  
T18N, R21E, MDB & M.



STOREY COUNTY, NEVADA  
 This map is prepared for the use of the Storey County Assessor for assessment and illustrative purposes ONLY. It does not represent a survey. No liability is assumed as to the sufficiency or accuracy of the data delineated herein.

Virginia City Highlands Unit 1  
 STOREY COUNTY