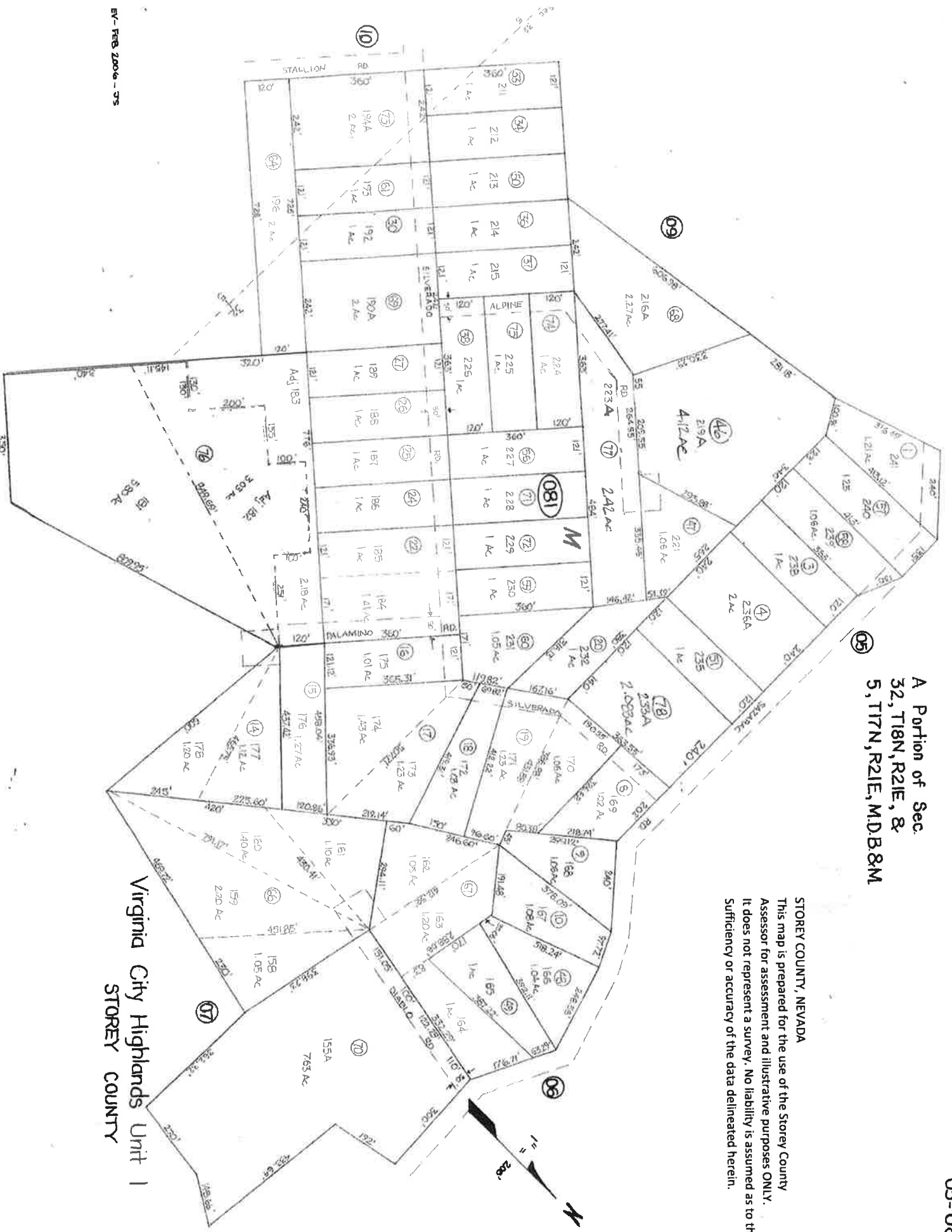


A Portion of Sec
32, T18N, R21E, &
5, T17N, R21E, MDB&M

STOREY COUNTY, NEVADA
This map is prepared for the use of the Storey County
Assessor for assessment and illustrative purposes ONLY.
It does not represent a survey. No liability is assumed as to the
sufficiency or accuracy of the data delineated herein.



Virginia City Highlands Unit 1
STOREY COUNTY