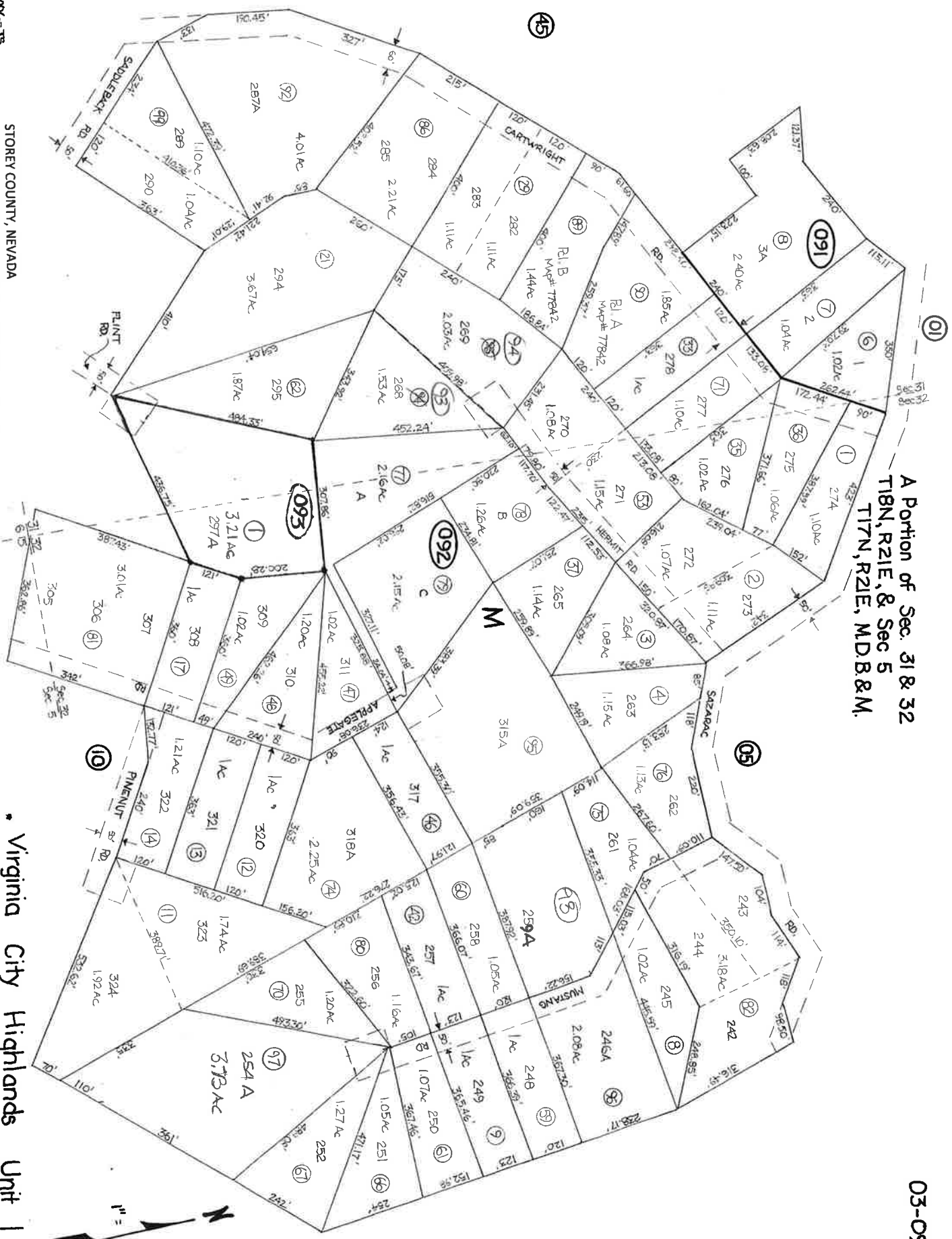


A Portion of Sec. 31 & 32
T18N, R2E, & Sec 5
T17N, R2E, M.D.B. & M.



Rev. April 2006 - JS

STOREY COUNTY, NEVADA

This map is prepared for the use of the Storey County Assessor for assessment and illustrative purposes ONLY. It does not represent a survey. No liability is assumed as to the sufficiency or accuracy of the data delineated herein.

Virginia City Highlands Unit 1

