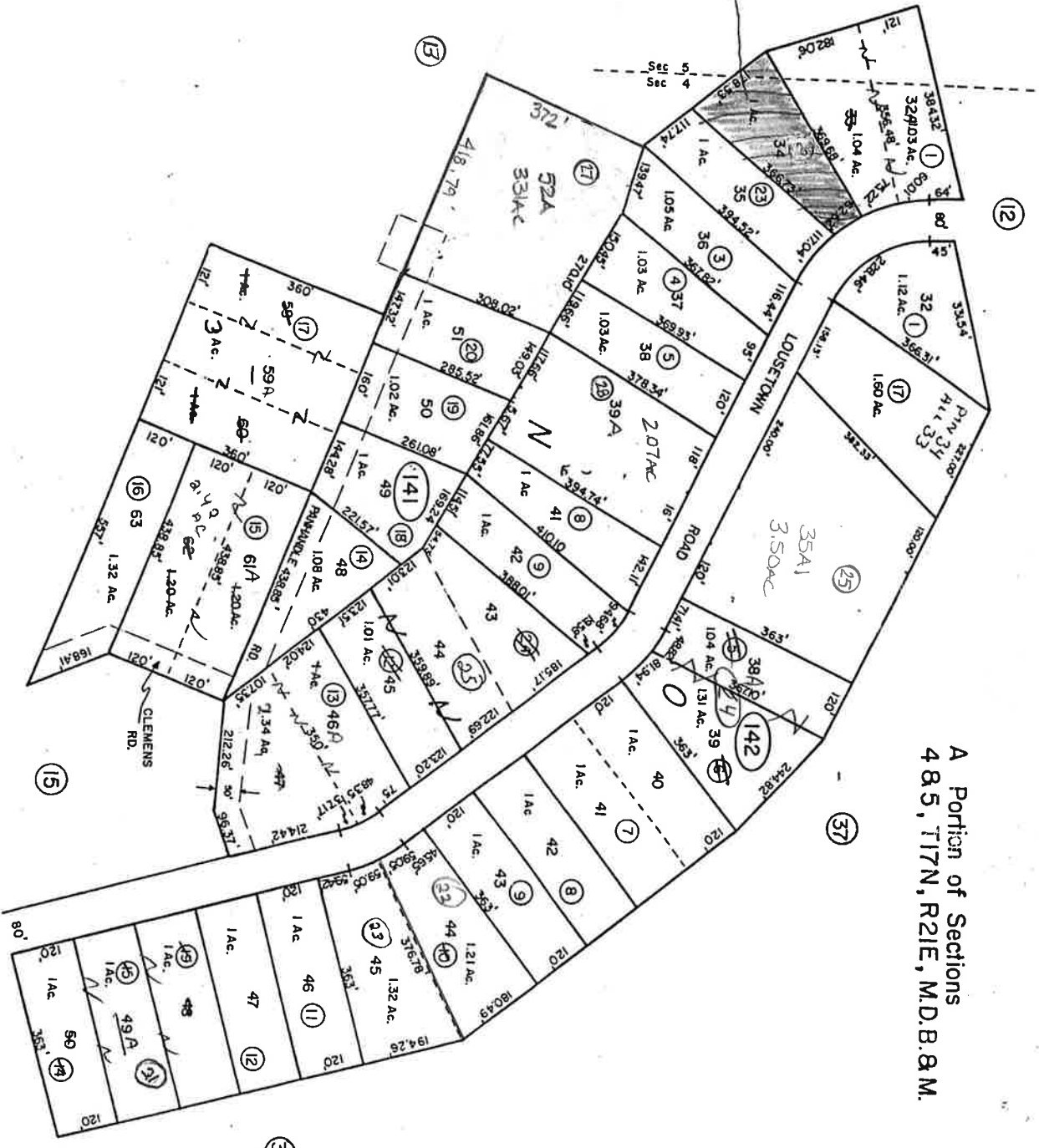


A Portion of Sections
4 8.5, T17N, R21E, M.D.B. & M.



MOVED TO
P. 13.

STOREY COUNTY, NEVADA
This map is prepared for the use of the Storey County Assessor for assessment and illustrative purposes ONLY. It does not represent a survey. No liability is assumed as to the sufficiency or accuracy of the data delineated herein.

Virginia City Highlands Unit I
STOREY COUNTY