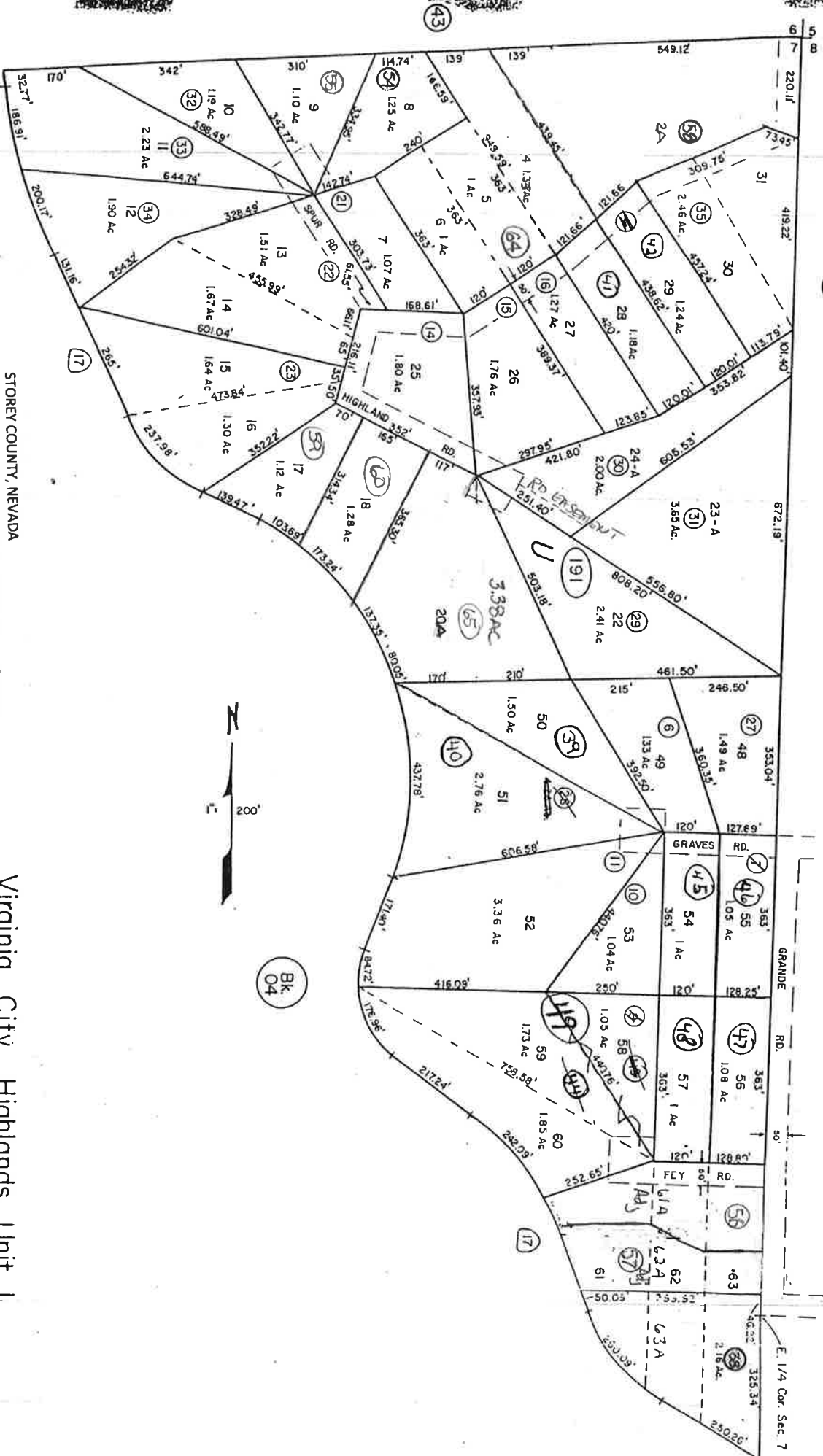


Portion of E² Sec 7, T17N, R21E, M.D.B. 8.M.

03-19



REV/DOAS/JUNE 92/TG
REV/DOAS/DEC 88/RAH
C/L/Dee 89/AC/A

STOREY COUNTY, NEVADA
This map is prepared for the use of the Storey County
Assessor for assessment and illustrative purposes ONLY.
It does not represent a survey. No liability is assumed as to the
sufficiency or accuracy of the data delineated herein.

Virginia City Highlands Unit I
STOREY COUNTY