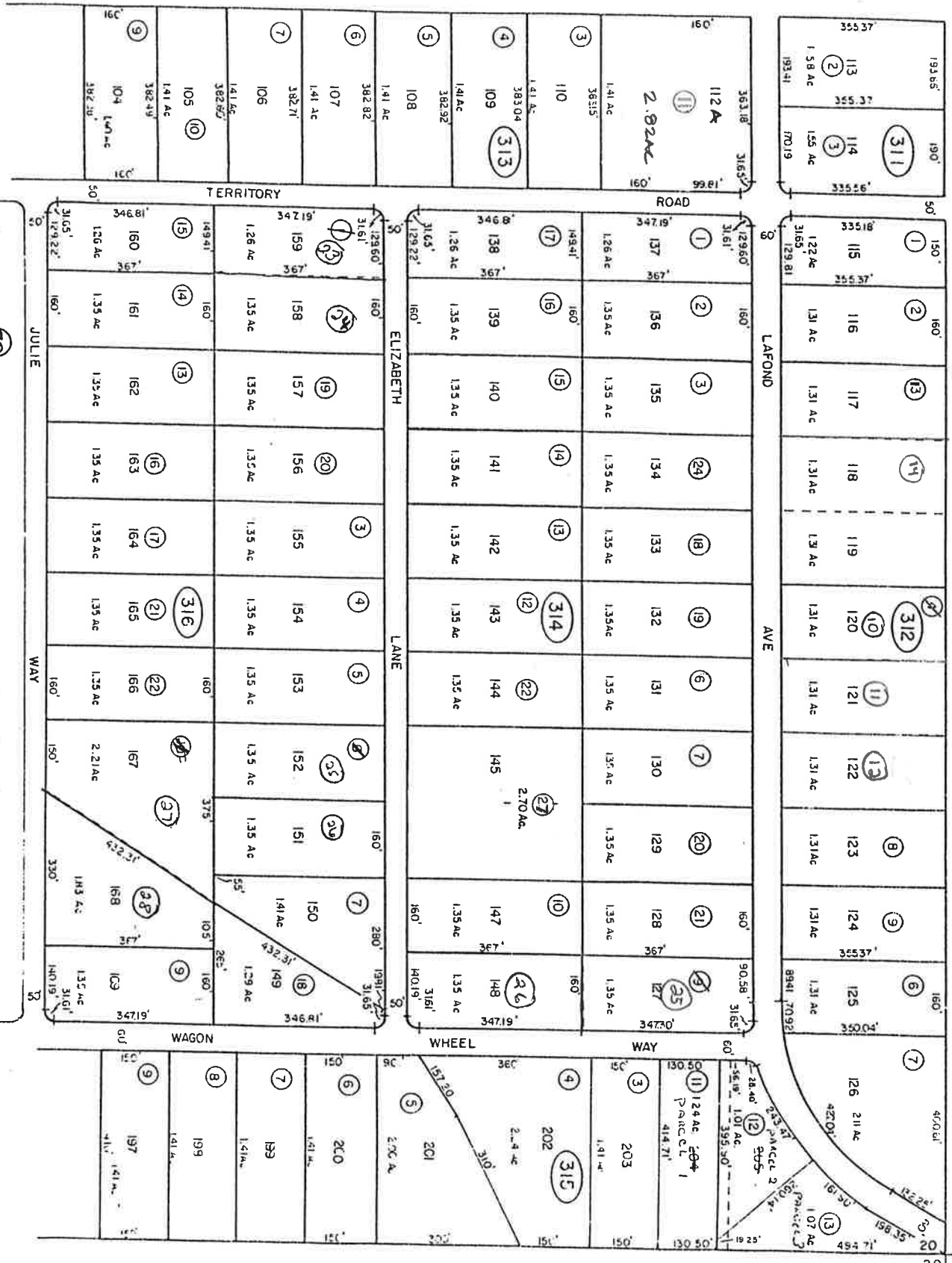


A Portion of SE 1/4 Sec. 20 11 1/4 N, R22E, M.D.B. & M.

04



Bk. 04

Bk. 04.

REV/00A5/JUNE 32/76
 REV/00A3/DEC 88/94H
 CVD/B/A/A
 CDT/00A5/AUG 79/WC

STOREY COUNTY, NEVADA
 This map is prepared for the use of the Storey County Assessor for assessment and illustrative purposes ONLY. It does not represent a survey. No liability is assumed as to the sufficiency or accuracy of the data delineated herein.

Mark Twain Estates Unit #7

STOREY COUNTY