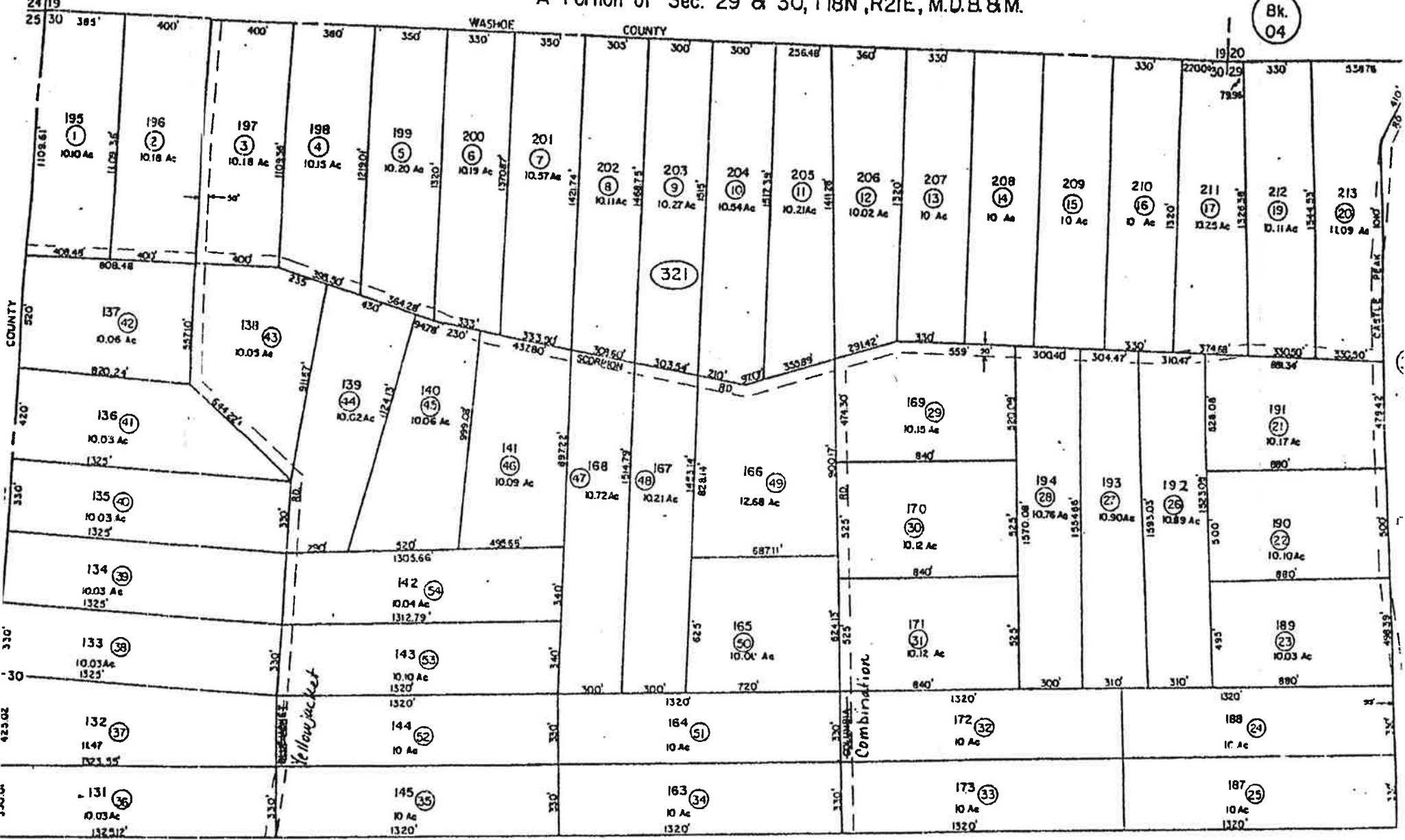


A Portion of Sec. 29 & 30, T18N, R21E, M.D.B. & M.

Bk. 04



46

STOREY COUNTY, NEVADA

This map is prepared for the use of the Storey County Assessor for assessment and illustrative purposes ONLY. It does not represent a survey. No liability is assumed as to the sufficiency or accuracy of the data delineated herein.

Highland Ranches
STOREY COUNTY