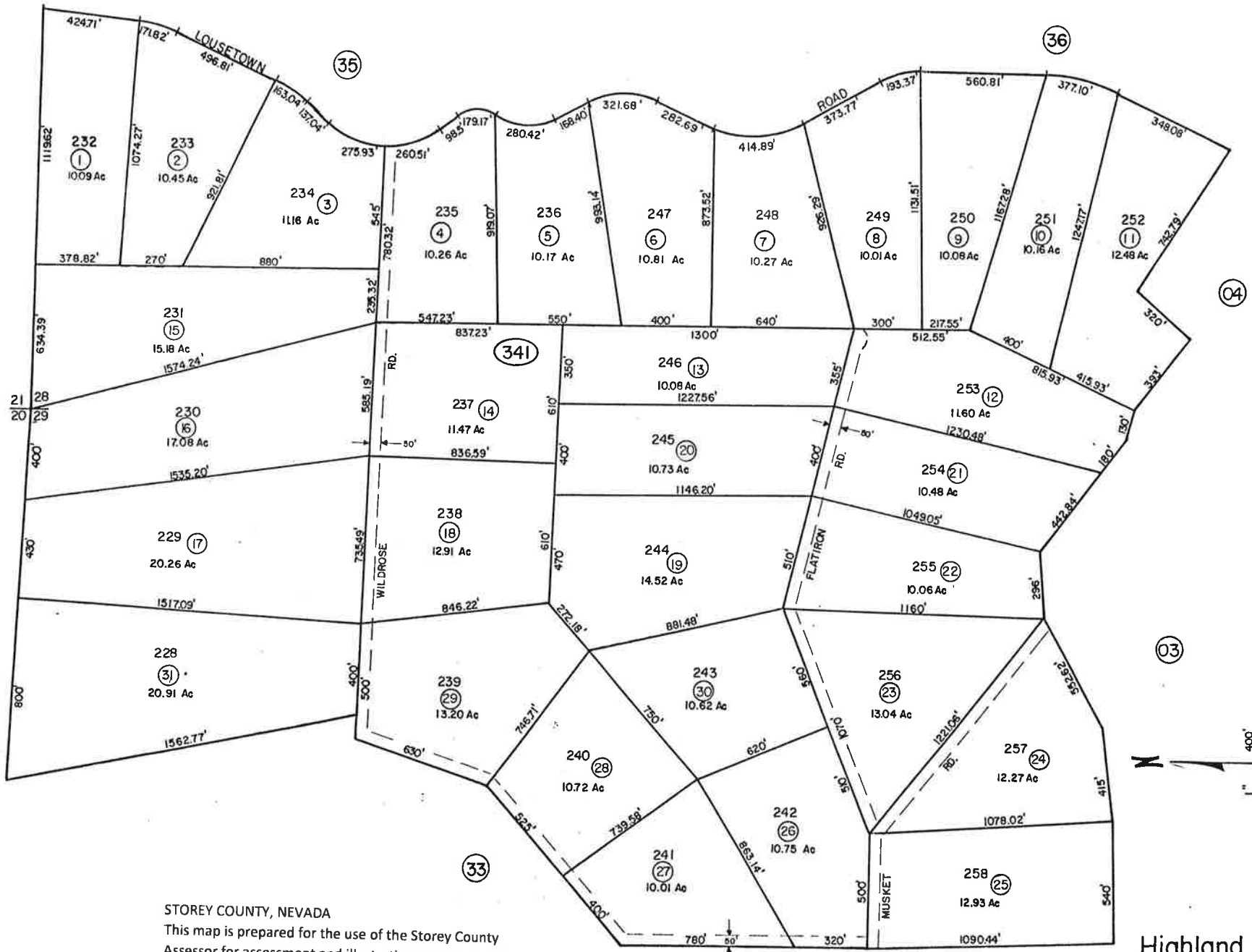


A Portion of Sec. 28 & 29, T18N, R21E, M.D.B. & M.



Bk. 04

STOREY COUNTY, NEVADA
 This map is prepared for the use of the Storey County Assessor for assessment and illustrative purposes ONLY. It does not represent a survey. No liability is assumed as to the sufficiency or accuracy of the data delineated herein.

REV/DOAS/DEC 08/RAH
 CW/DEC 04/ACB
 REV/DOAS/DEC 08/RAH

Highland Ranches
 STOREY COUNTY