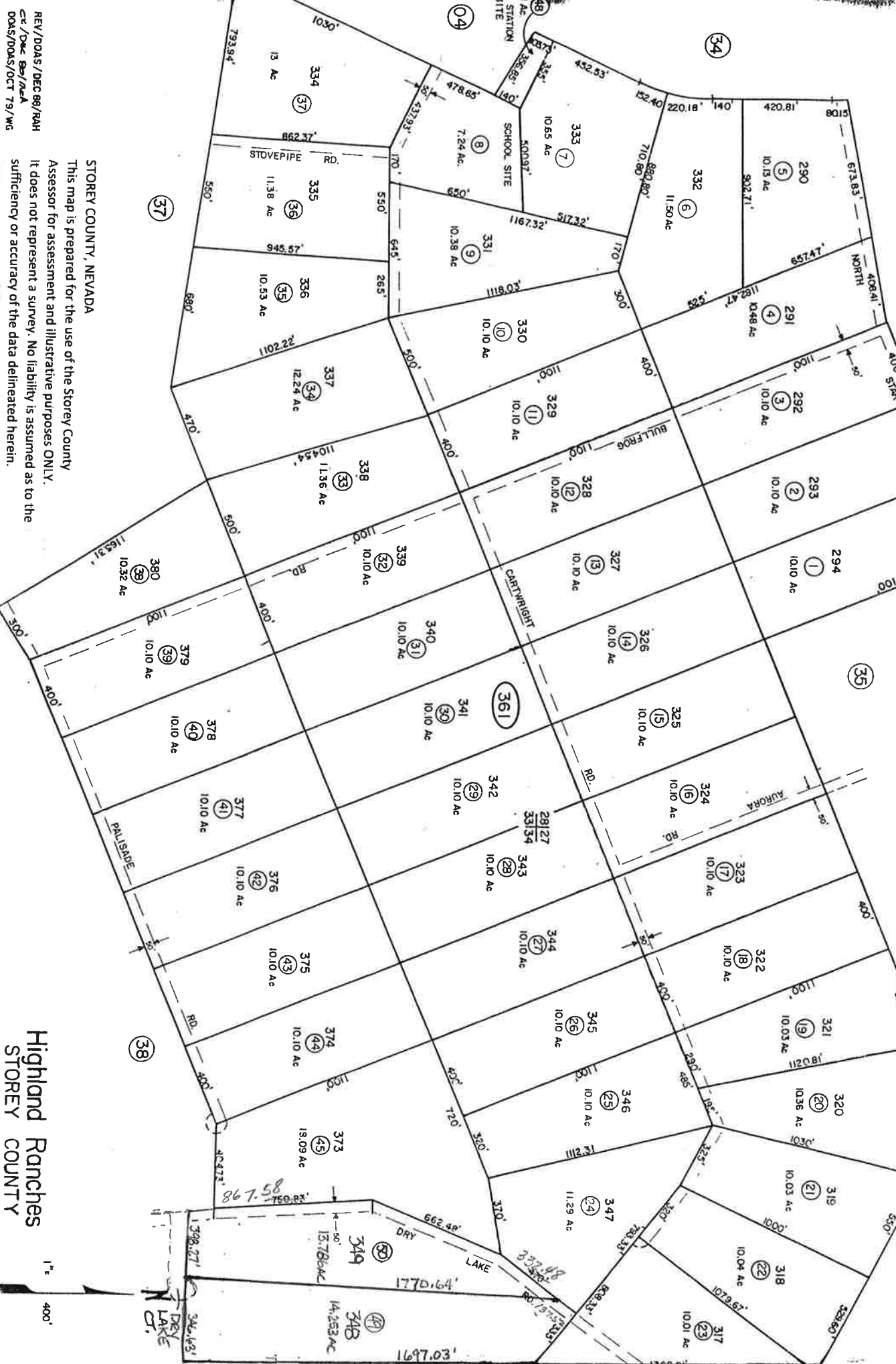


A Portion of Sec. 27, 28, 33 & 34
T18N, R21E, M.D.B.8.M.



REV/DOAS/DEC 88/PAH
Ck/Doc 88/PAH
DOAS/DOAS/OCT 79/WG

STOREY COUNTY, NEVADA
This map is prepared for the use of the Storey County Assessor for assessment and illustrative purposes ONLY. It does not represent a survey. No liability is assumed as to the sufficiency or accuracy of the data delineated herein.

Highland Ranches
STOREY COUNTY

1" = 400'