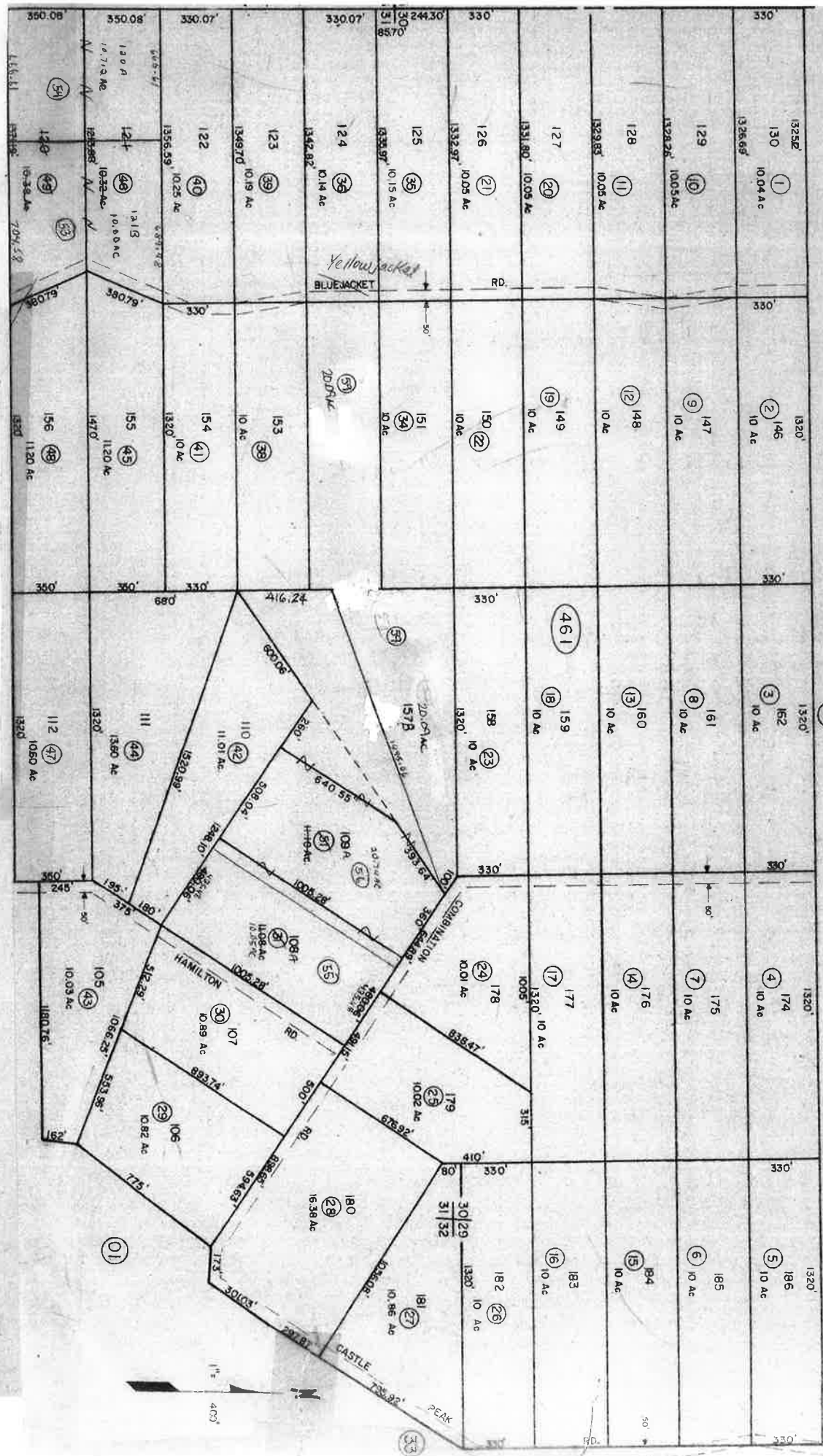


Portions of Sec. 29, 30, 31, & 32
T18N, R21E, M.D.B. & M.

03-46



REV/ROADS / JUNE 92 / T15
REV/ROADS / DEC 98 / R14H
CIV / DEC 98 / R14A
INT / DEC 97 / T15 / R14H

STOREY COUNTY, NEVADA
This map is prepared for the use of the Storey County Assessor for assessment and illustrative purposes ONLY. It does not represent a survey. No liability is assumed as to the sufficiency or accuracy of the data delineated herein.

Highland Ranches
STOREY COUNTY

(45)