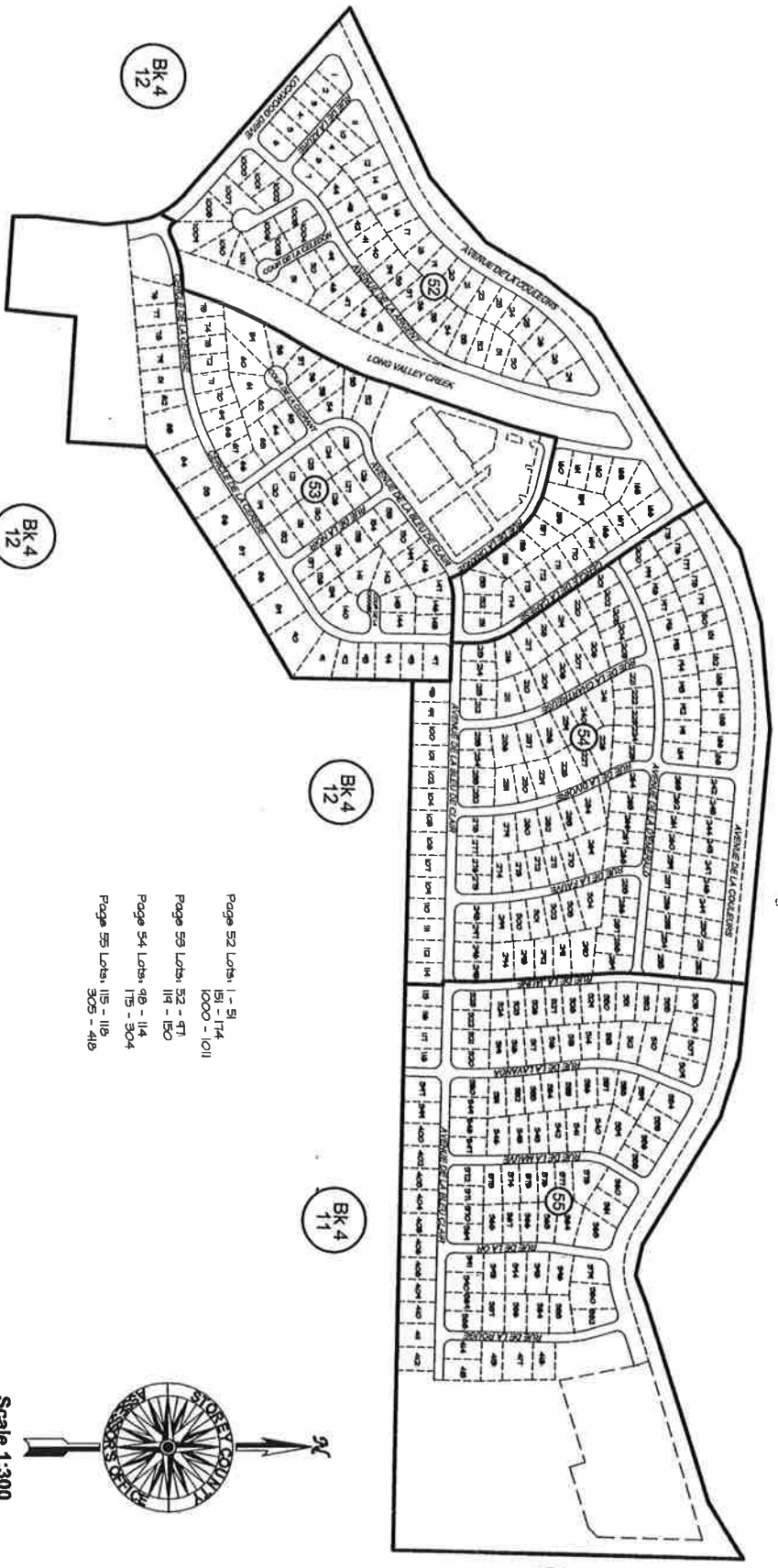


PORTION E1/2 SE1/4 SEC. 17
 AND
 PORTION SW1/4 SEC. 16
 T.19 N., R.21 E., M.D.B.&M.

INDEX MAP
PAGES 52-55



Page 52 Lots: 1 - 51
 1000 - 114
 Page 53 Lots: 52 - 47
 114 - 150
 Page 54 Lots: 48 - 114
 115 - 304
 Page 55 Lots: 115 - 118
 305 - 418



Scale 1:300
 Redrafted 10/22/99

RAINBOW BEND SUBDIVISION
 A PLANNED UNIT DEVELOPMENT
 RECORDED 11/6/1992
STOREY COUNTY

STOREY COUNTY, NEVADA
 THIS MAP IS PREPARED FOR THE USE OF THE STOREY CO.
 ASSESSOR FOR ASSESSMENT AND ILLUSTRATIVE PURPOSES
 ONLY. IT DOES NOT REPRESENT A SURVEY. NO LIABILITY
 IS ASSUMED AS TO THE SUFFICIENCY OR ACCURACY OF
 THE DATA DELINEATED HEREON.