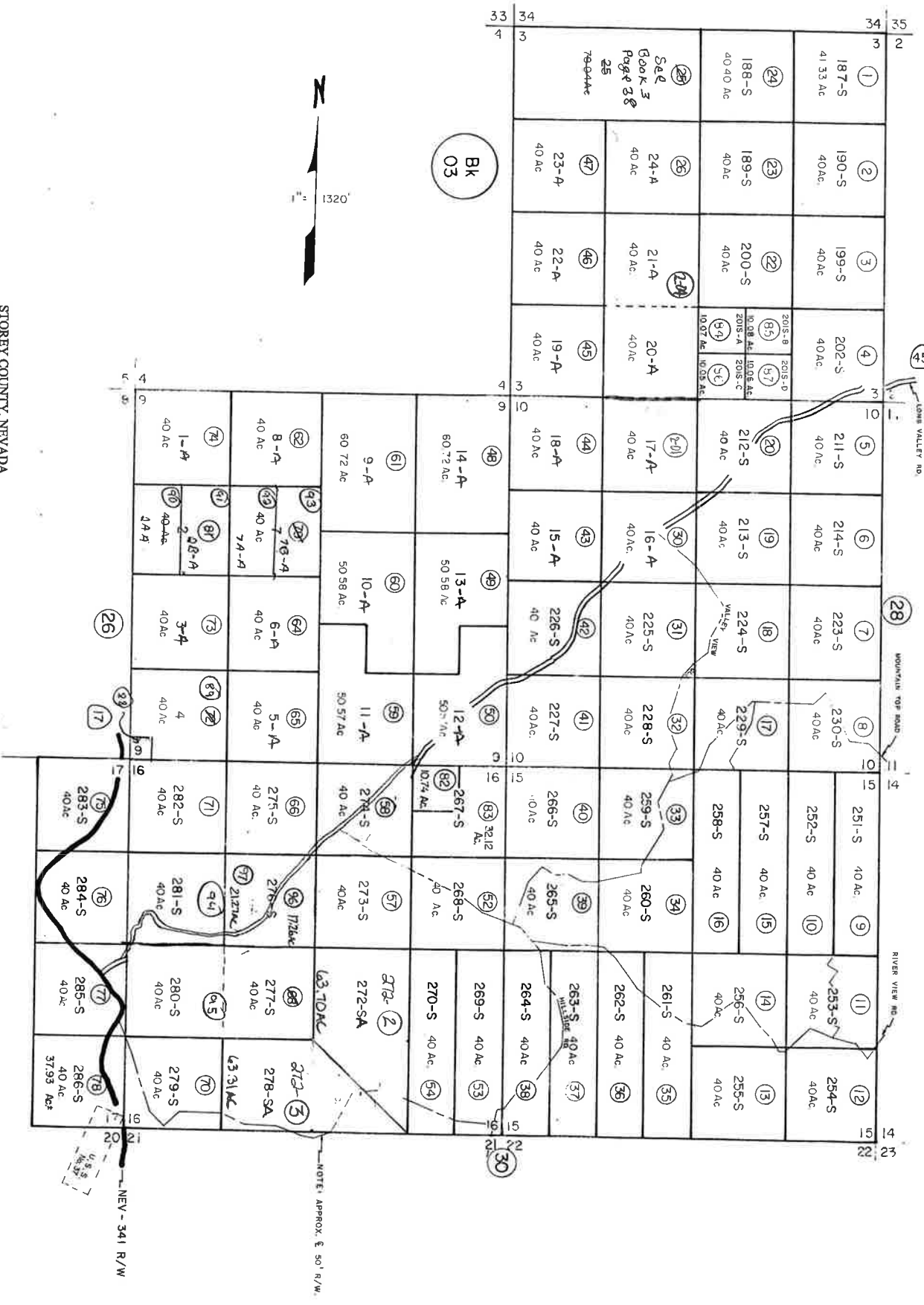
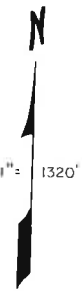


Portion of Section 17, 8 Sections 3,9,10,15,16 T17N,R21E,MDB&M.



Bk 03



REV/DOAS/MAY 92/TG
 REV/DOAS/JUN 89/DA
 C/O Doc 89/1/4
 DOT/DOAS/JULY 80/DL

STOREY COUNTY, NEVADA
 This map is prepared for the use of the Storey County Assessor for assessment and illustrative purposes ONLY. It does not represent a survey. No liability is assumed as to the sufficiency or accuracy of the data delineated herein.

STOREY COUNTY

NOTE: APPROX. E 50' R/W.

NEV - 341 R/W