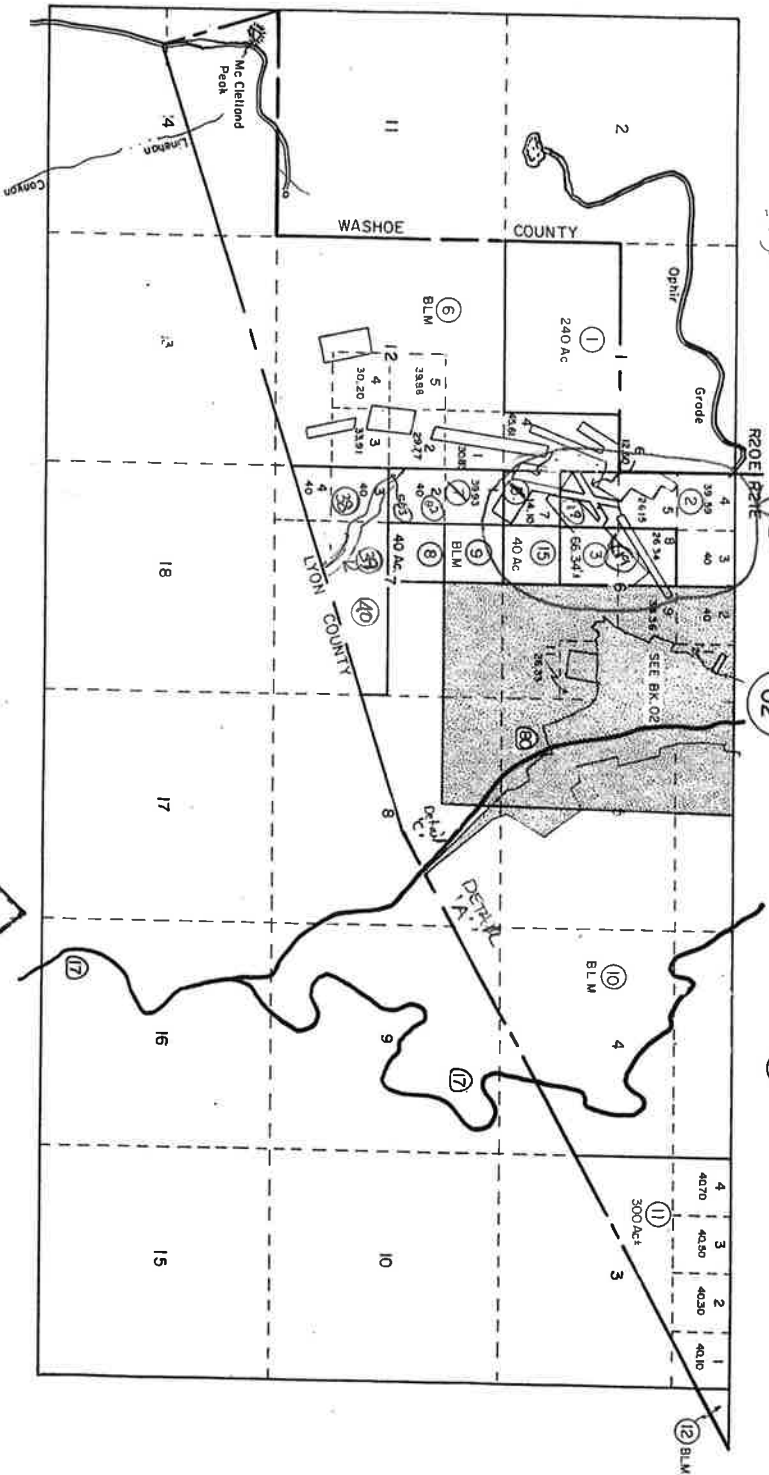


Sections 1, 2, 11, 8 A Portion of Sections 12, 13, 8, 14 T16N, R20E
Sections 5, 6, 8, A Portion of Sections 3, 4, 7, 8, 8, 9, T16N, R21E

M.D.B. & M.



SEE DETAIL "D"
SEE PAGE

NOTE: PCL's 04-351-13, 16, 17, 18 & 19 unknown locations.

STOREY COUNTY

MINI-DIA
OPITIR
BLUE
TRUCK
USS #
SOIL

800-002-71

