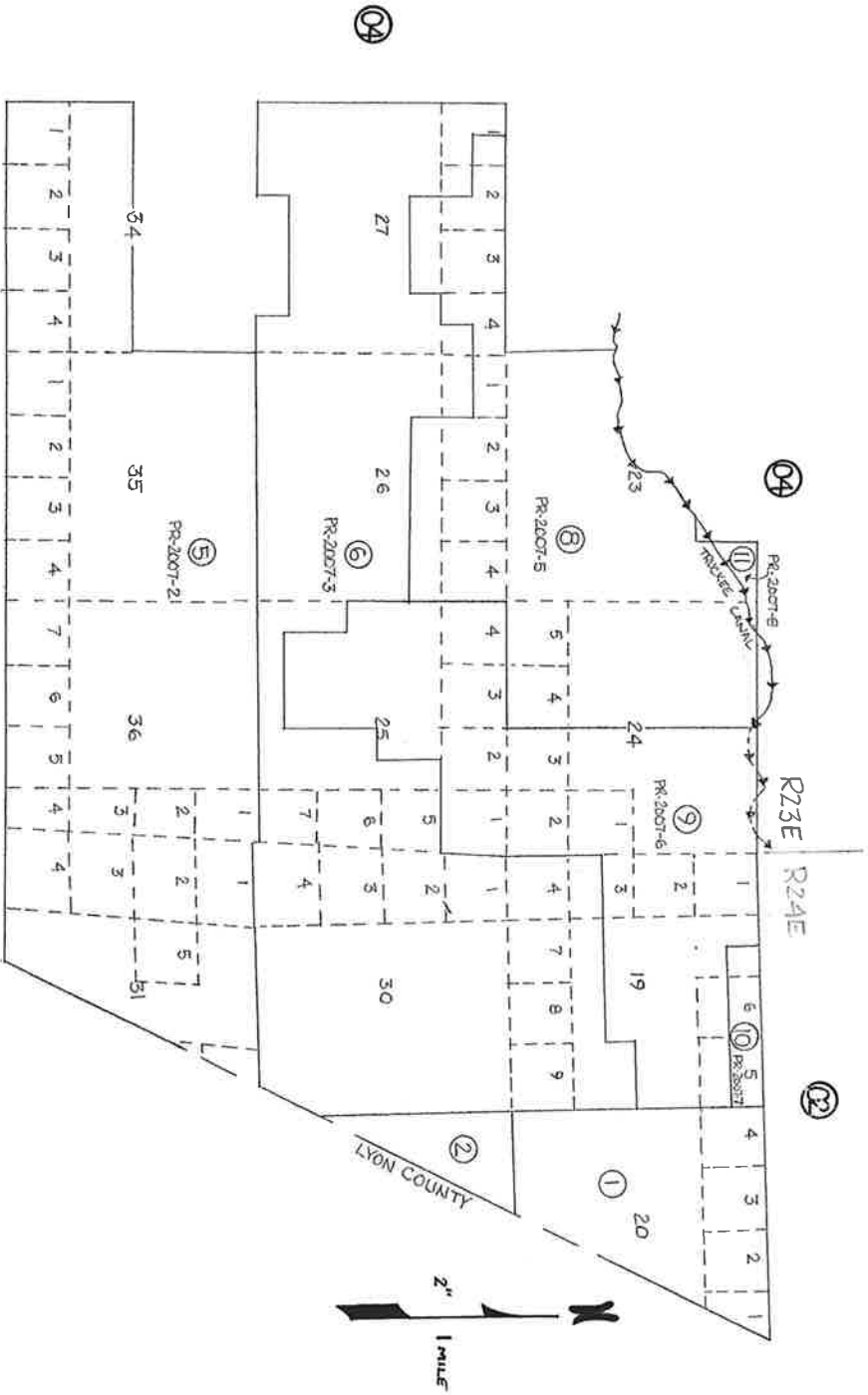


Sec. 24, 25, 26, 35, 36 - T20N, R23E
 Por of Sec. 23, 27, 34 - T20N, R23E
 Sec. 19 - T20N, R24E
 Por of Sec. 20, 29, 30, 31 - T20N, R24E
 M.D.B. & M.



Revised: Sept. 2006 -JS

STOREY COUNTY, NEVADA
 This map is prepared for the use of the Storey County Assessor for assessment and illustrative purposes ONLY. It does not represent a survey. No liability is assumed as to the sufficiency or accuracy of the data delineated herein.

STOREY COUNTY