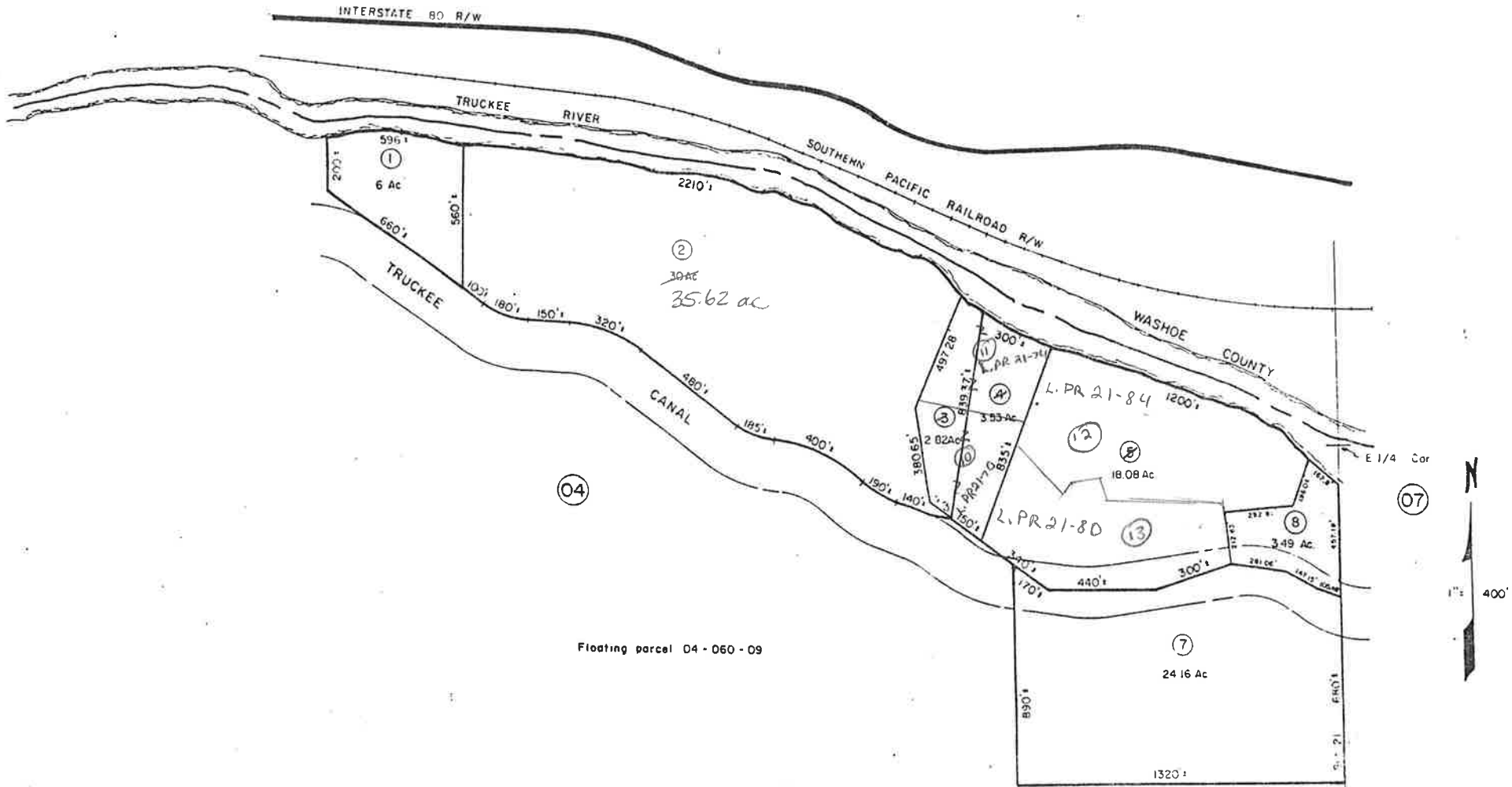


Portion of Section 21, T20N, R23E, M.D.B.&M.



Floating parcel 04-060-09

STOREY COUNTY, NEVADA

This map is prepared for the use of the Storey County Assessor for assessment and illustrative purposes ONLY. It does not represent a survey. No liability is assumed as to the sufficiency or accuracy of the data delineated herein.