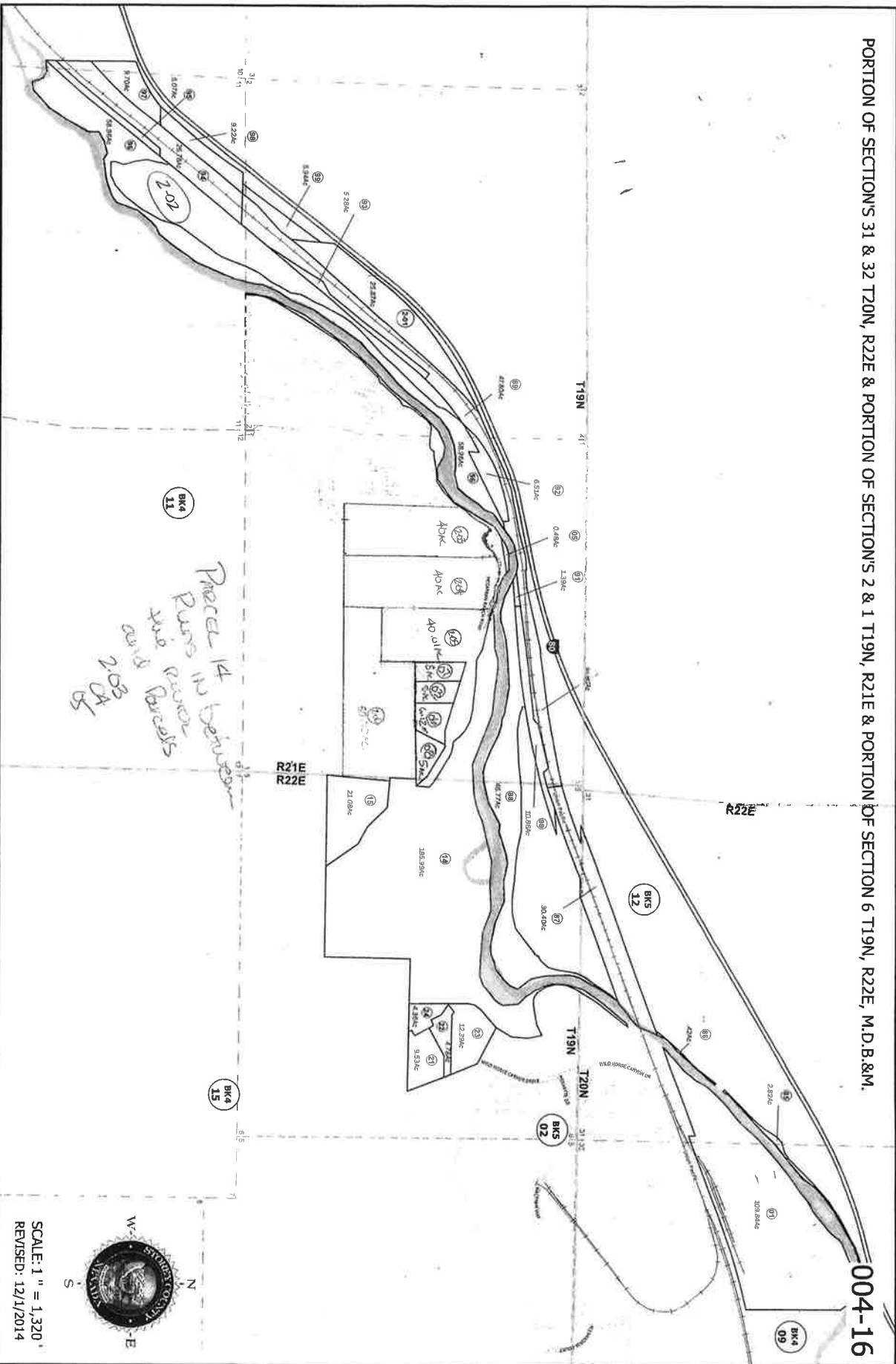


PORTION OF SECTIONS 31 & 32 T20N, R22E & PORTION OF SECTIONS 2 & 1 T19N, R21E & PORTION OF SECTION 6 T19N, R22E, M.D.B.&M.



SCALE: 1" = 1,320'
 REVISED: 12/1/2014

STOREY COUNTY, NEVADA
 This map is prepared for the use of the Storey County Assessor for assessment and illustrative purposes ONLY.
 It does not represent a survey. No liability is assumed as to the sufficiency or accuracy of the data delineated herein.