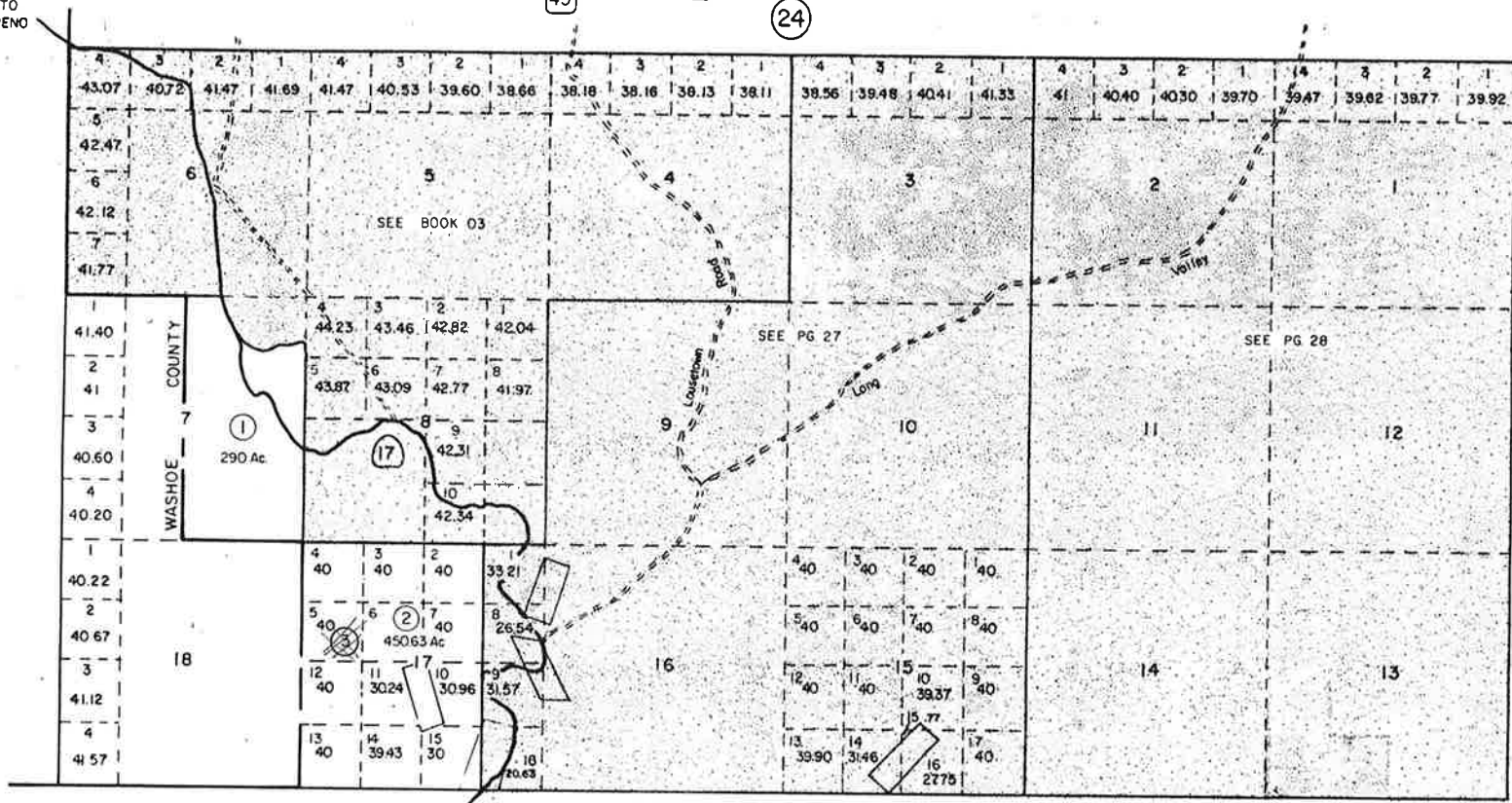


N 1/2 - T17N, R21E

TO RENO



NOTE: 04-260-03 no actual description.

STOREY COUNTY

STOREY COUNTY, NEVADA

This map is prepared for the use of the Storey County Assessor for assessment and illustrative purposes ONLY. It does not represent a survey. No liability is assumed as to the sufficiency or accuracy of the data delineated herein.