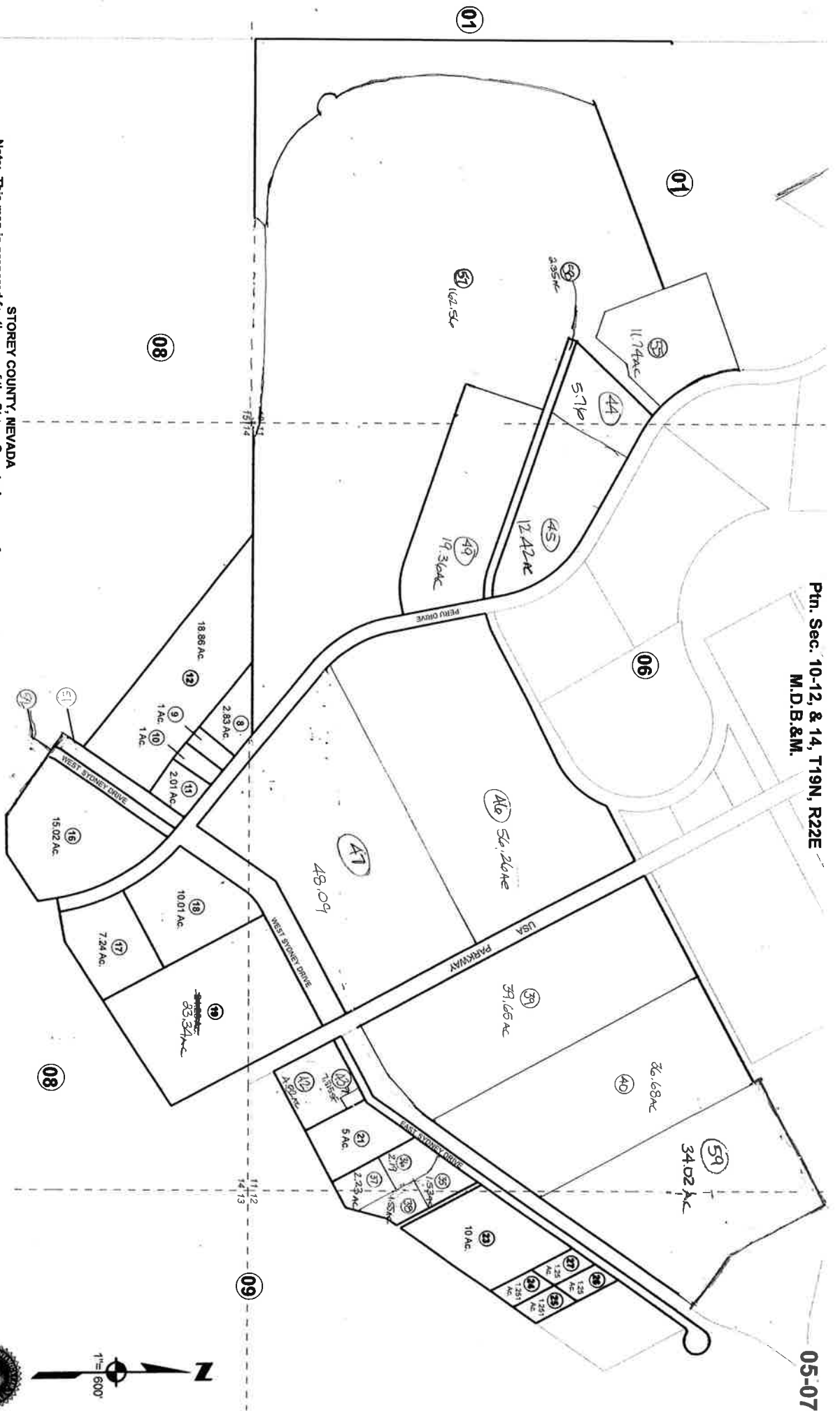


Ptn. Sec. 10-12, & 14, T19N, R22E
M.D.B. & M.

05-07



STOREY COUNTY, NEVADA
Note: This map is prepared for the use of the Storey County Assessor for assessment and illustrative purposes ONLY. It does not represent a survey. No liability is assumed as to the sufficiency or accuracy of the data delineated herein.
Storey County is an equal opportunity provider.

REV/MAY 2009/IBM

