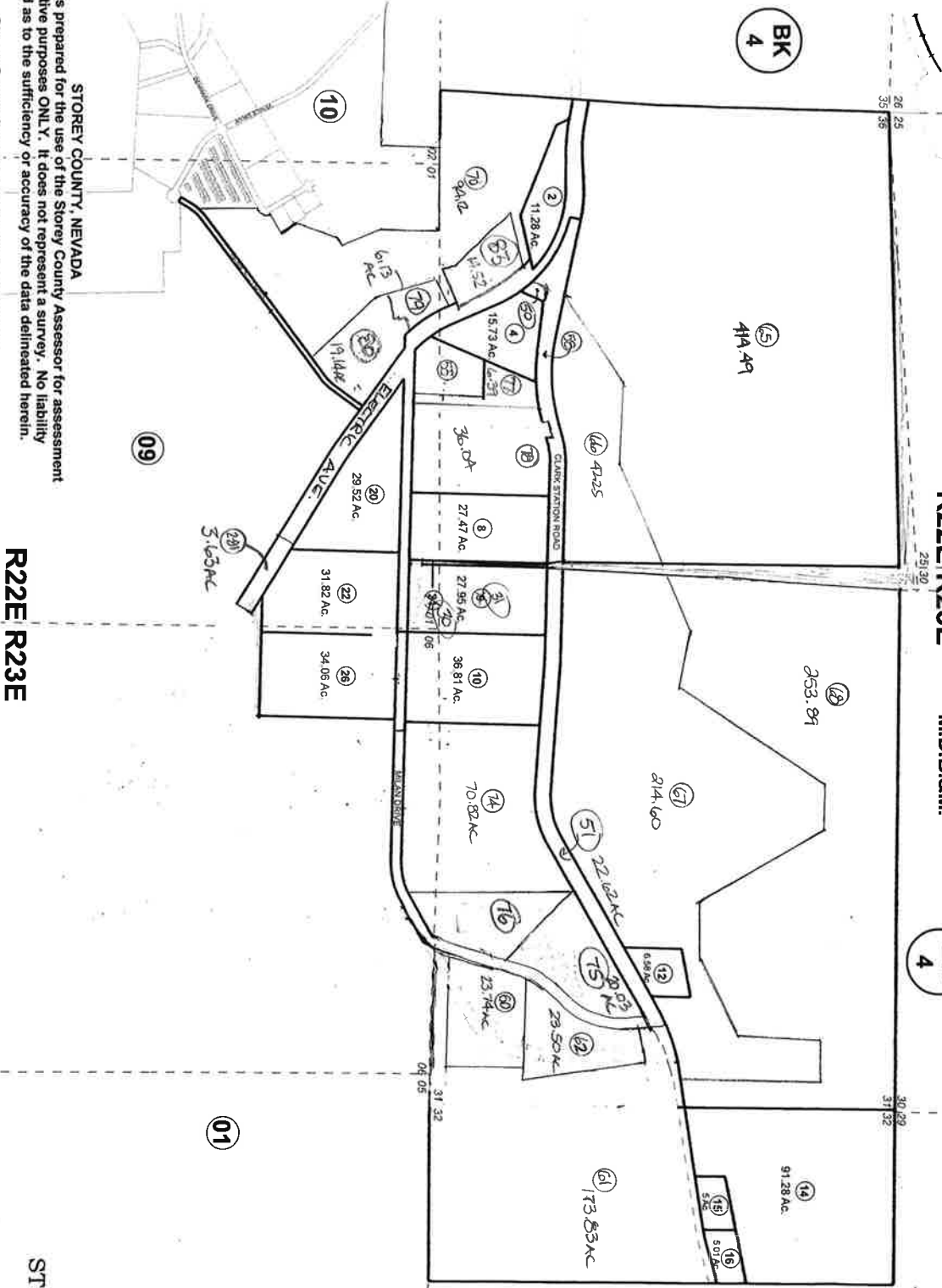


Sec. 36, T20N, R22E
Sec. 31 & Ptn. 32, T20N, R23E
Ptn. Sec. 1 & 2, T19N, R22E
Ptn. Sec. 6, T19N, R23E
M.D.B.&M.



STOREY COUNTY, NEVADA
Note: This map is prepared for the use of the Storey County Assessor for assessment and illustrative purposes ONLY. It does not represent a survey. No liability is assumed as to the sufficiency or accuracy of the data delineated herein.
REV/SEP 2009/BNM Storey County is an equal opportunity provider.

R22E R23E

STOREY COUNTY

T20N
T19N

