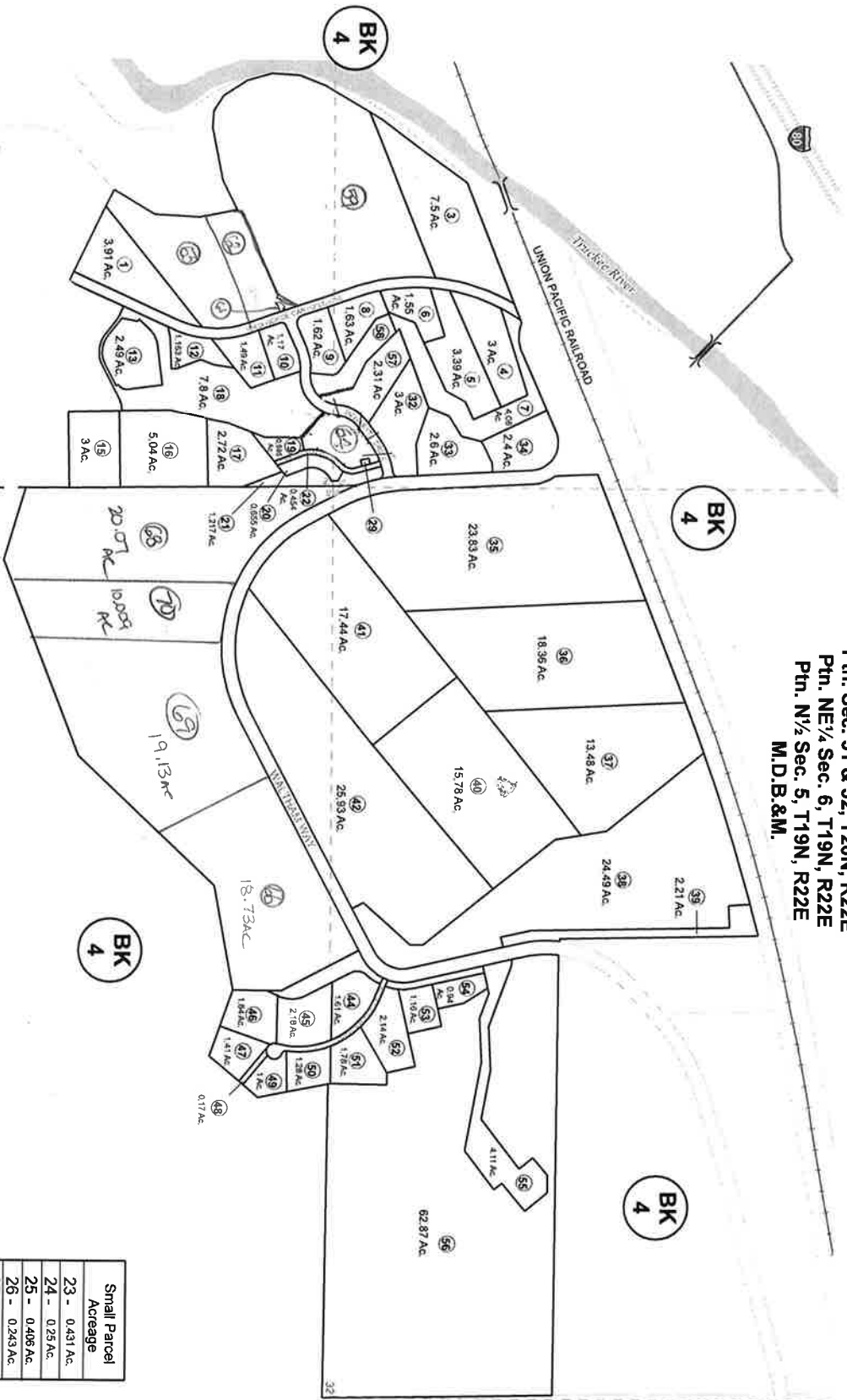


Ptn. Sec. 31 & 32, T20N, R22E
 Ptn. NE 1/4 Sec. 6, T19N, R22E
 Ptn. N 1/2 Sec. 5, T19N, R22E
 M.D.B.&M.

05-02



| Small Parcel Acreage |
|----------------------|
| 23 - 0.431 Ac. |
| 24 - 0.25 Ac. |
| 25 - 0.405 Ac. |
| 26 - 0.243 Ac. |
| 27 - 0.232 Ac. |
| 28 - 0.347 Ac. |
| 29 - 0.039 Ac. |
| 30 - 72,664 SF |

STOREY COUNTY, NEVADA
 Note: This map is prepared for the use of the Storey County Assessor for assessment and illustrative purposes ONLY. It does not represent a survey. No liability is assumed as to the sufficiency or accuracy of the data delineated herein.

Storey County is an equal opportunity provider.

STOREY COUNTY

RE/MAY 2019BM

