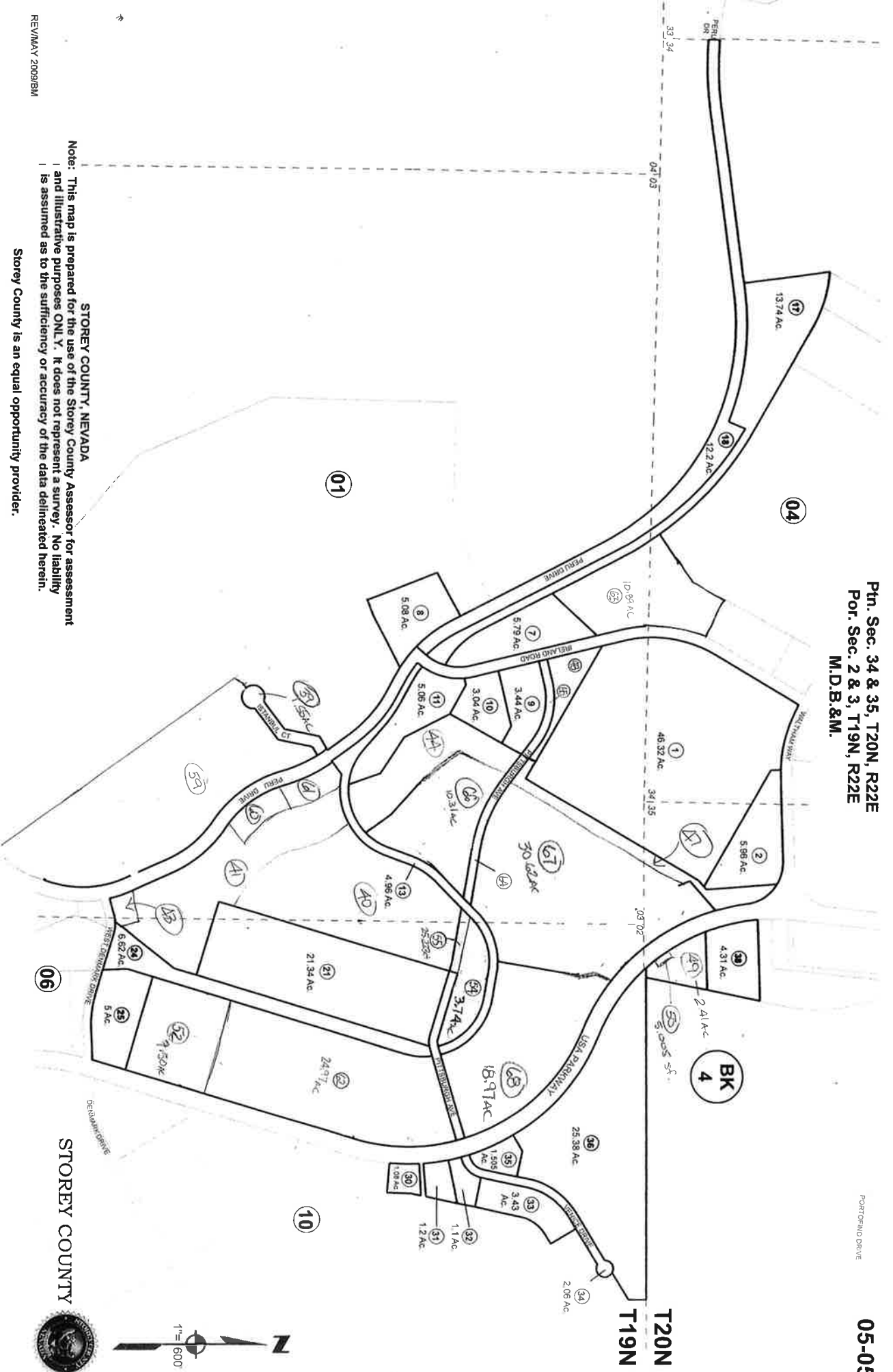


Ptn. Sec. 34 & 35, T20N, R22E  
 Por. Sec. 2 & 3, T19N, R22E  
 M.D.B.&M.

PORTFOLIO DRIVE

05-05



STOREY COUNTY, NEVADA

Note: This map is prepared for the use of the Storey County Assessor for assessment and illustrative purposes ONLY. It does not represent a survey. No liability is assumed as to the sufficiency or accuracy of the data delineated herein.

Storey County is an equal opportunity provider.



STOREY COUNTY

REVMAY 2009/BM