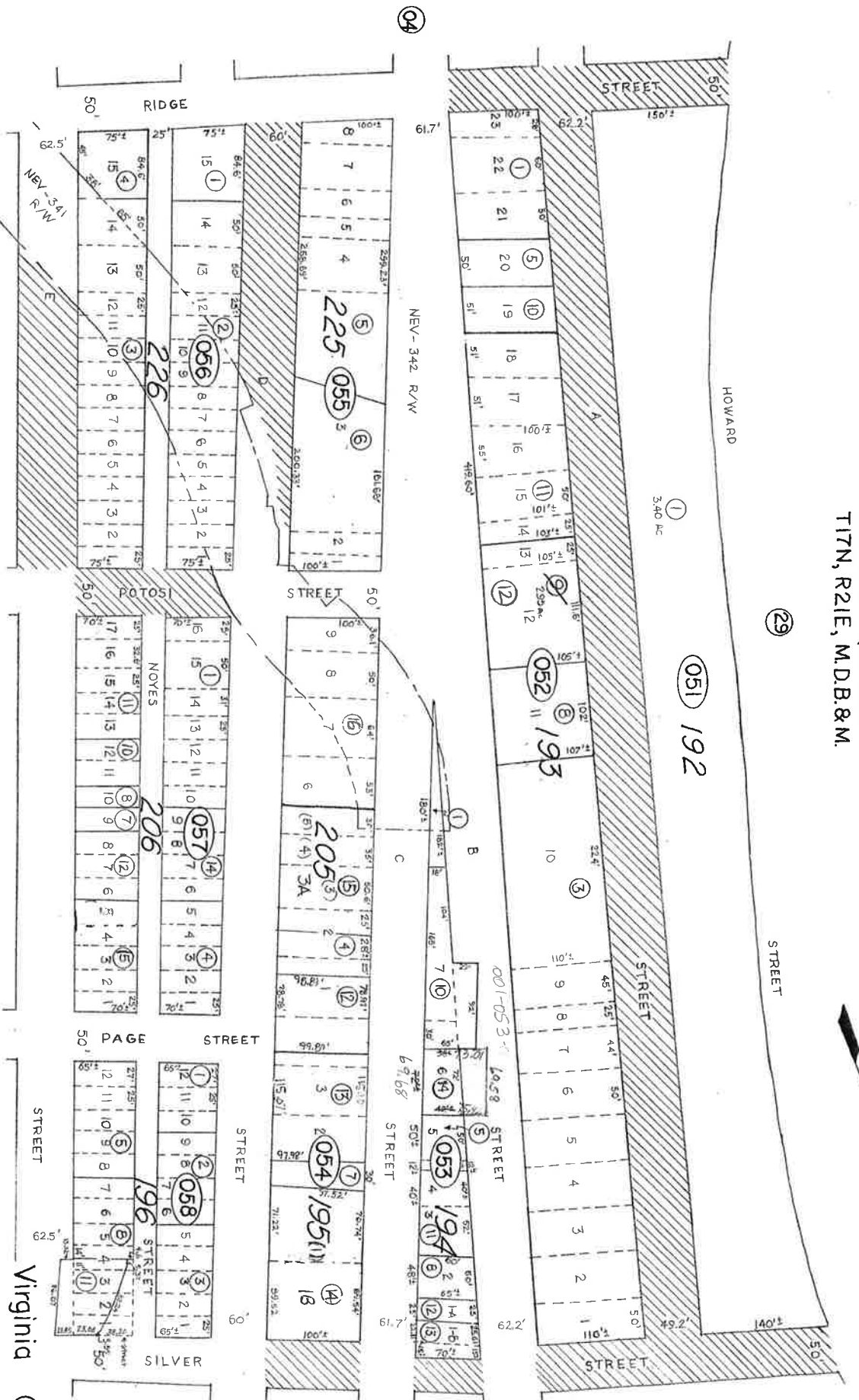


Por. S2SW4, Sec. 29
 Por. N2NW4, Sec. 32
 T17N, R21E, M.D.B. & M.



Revised Mar 2004 - JS
 Oct. 2005 - JS

STOREY COUNTY, NEVADA
 This map is prepared for the use of the Storey County Assessor for assessment and illustrative purposes ONLY. It does not represent a survey. No liability is assumed as to the sufficiency or accuracy of the data delineated herein.

STOREY COUNTY

Virginia City

12

13

04

29

06