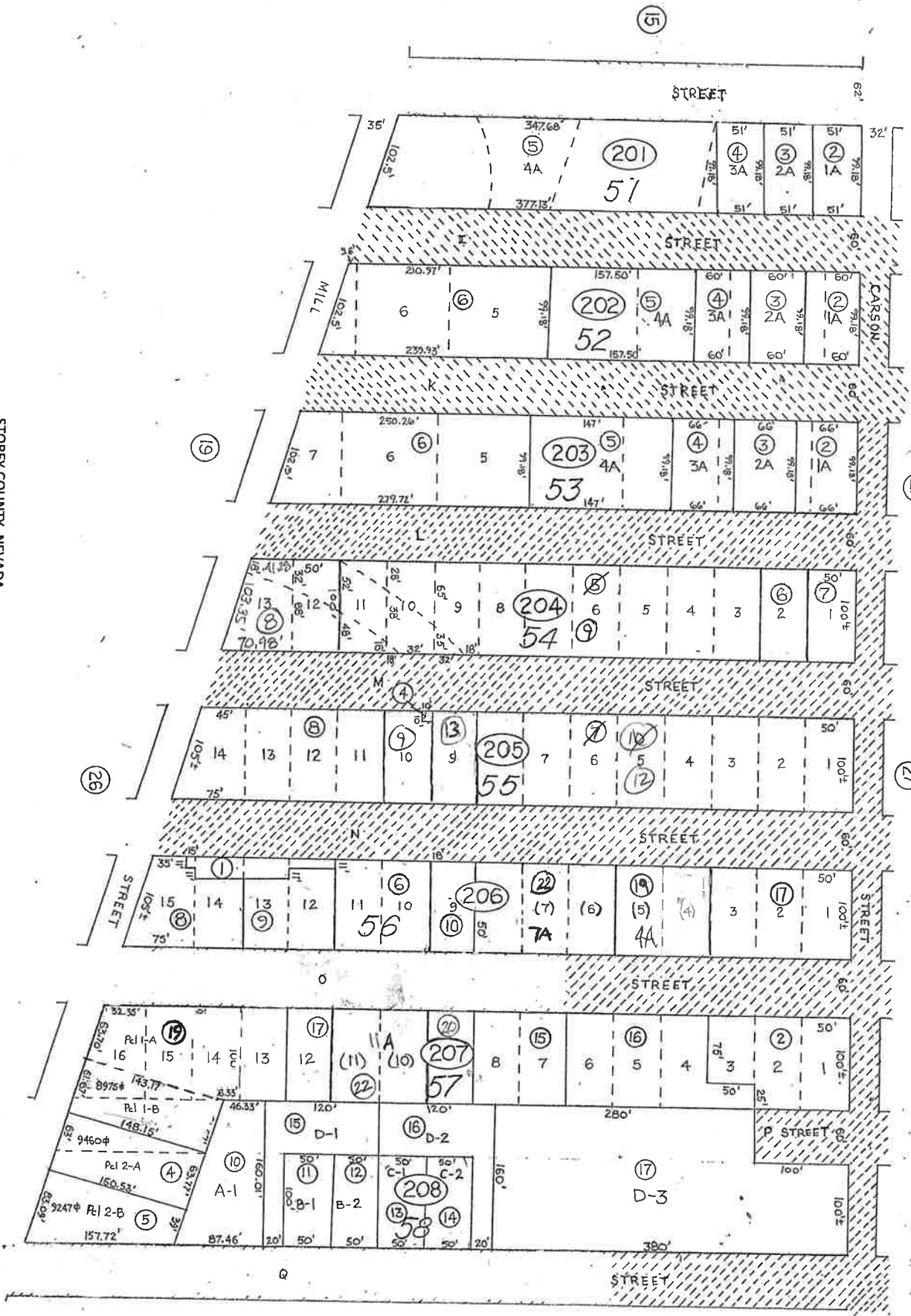


Por. of NE 4 of Sec. 29
T17N, R21E, M.D. & M



STOREY COUNTY, NEVADA
This map is prepared for the use of the Storey County Assessor for assessment and illustrative purposes ONLY. It does not represent a survey. No liability is assumed as to the sufficiency or accuracy of the data delineated herein.

Virginia City
STOREY COUNTY

Page 31
Sits here

Revised - Mar 2004 - JS