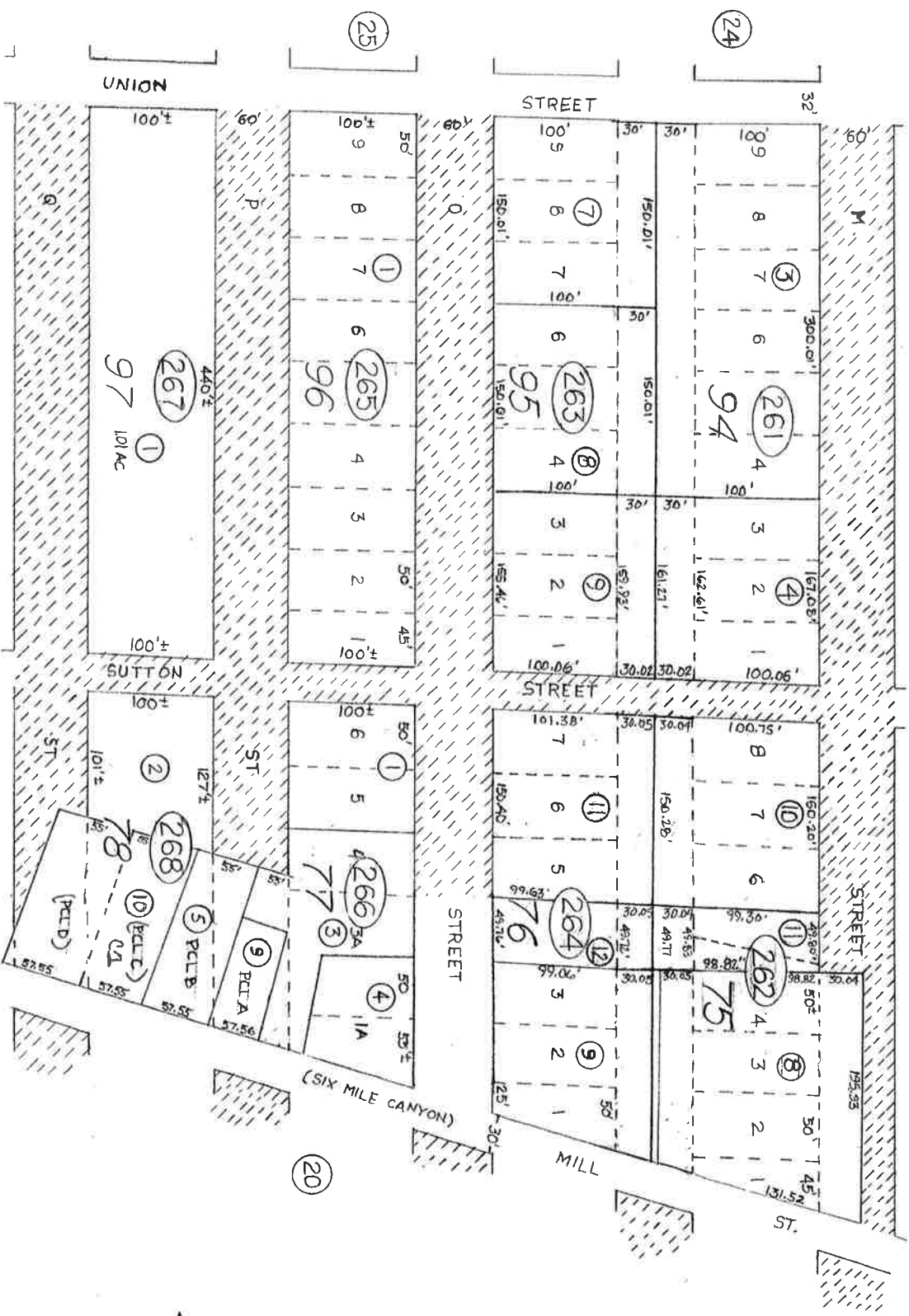


Por of S²NE⁴ of Sec. 29
 T17N, R21E, M.D.B.&M.

(19)



(31)

HOSPITAL

STOREY COUNTY, NEVADA
 This map is prepared for the use of the Storey County Assessor for assessment and illustrative purposes ONLY. It does not represent a survey. No liability is assumed as to the sufficiency or accuracy of the data delineated herein.



Virginia City